

Oracle JD Edwards Update

January 2019

ORACLE
JD Edwards

ORACLE

Copyright © 2019, Oracle and/or its affiliates. All rights reserved. |

Safe Harbor Statement

The following is intended to outline our general product direction. It is intended for information purposes only, and may not be incorporated into any contract. It is not a commitment to deliver any material, code, or functionality, and should not be relied upon in making purchasing decisions. The development, release, and timing of any features or functionality described for Oracle's products remains at the sole discretion of Oracle.

Program Agenda

- 1 ➤ **The JD Edwards Story**
- 2 ➤ **Continuous Innovation and Product Roadmap**
- 3 ➤ **Recent Innovations & Roadmap Details**
- 4 ➤ **JD Edwards & Cloud**
- 5 ➤ **Summary and Call to Action**

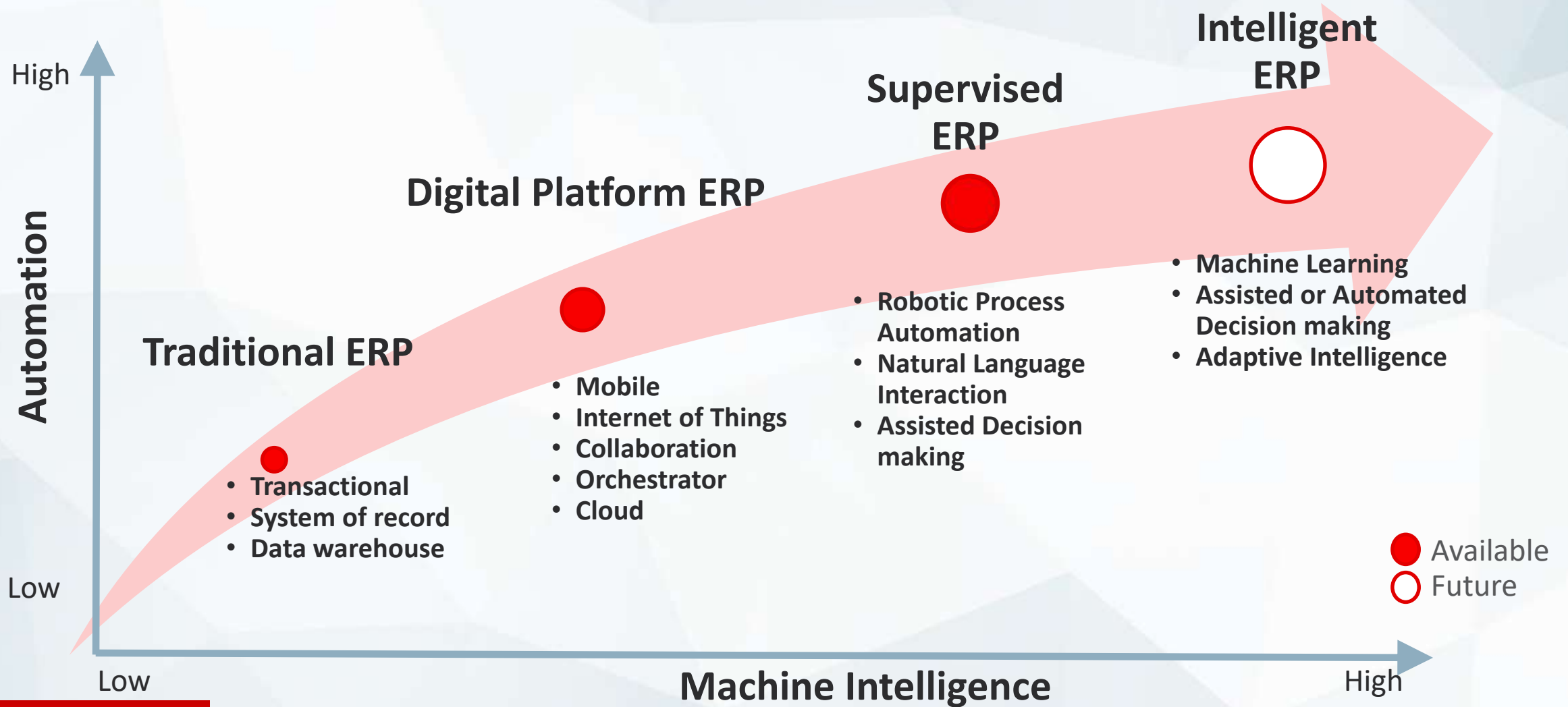
The JD Edwards Story

- **Customer needs for their ERP system have evolved**
 - Driven by technology, the SaaS ownership experience, and competition
 - At the same time, many “traditional” ERP needs remain the same
- **Both the customer and the vendor must adapt**
 - Embrace new technologies and approaches while keeping the business competitive
 - Balance the economics of staying current and change with the value derived
- **A formula for continued success**
 - Vendor should provide Choice and Control for customers
 - Customer should rethink planning - from large big bang projects to incremental projects

Waiting is not a strategy –successful businesses will be an early adopter or fast follower

JD Edwards Vision

Putting Intelligence Into ERP



JD Edwards Continuous Innovation

EnterpriseOne 9.2 Continuous Delivery

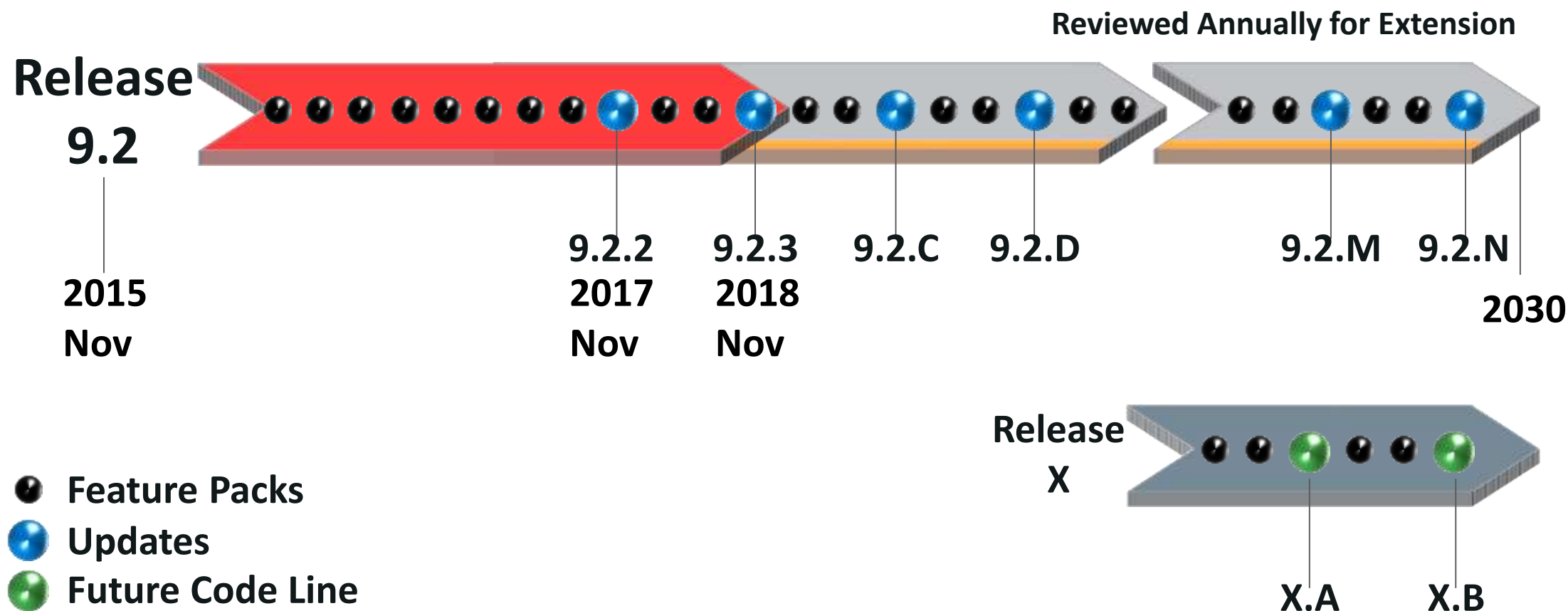
- Product innovation delivered by Oracle in smaller updates
- Delivered on a more frequent basis
- Released rapidly to deliver value to the market faster

EnterpriseOne 9.2 Continuous Adaptation

- New releases adopted by customers to realize the value delivered by Oracle
- Adapt business processes and approach to realize value
- Reducing the requirement for costly, disruptive upgrades

JD Edwards Continuous Innovation and Product Roadmap

JD Edwards EnterpriseOne Product Roadmap



The above is intended to outline our general product direction. It is intended for information purposes only, and may not be incorporated into any contract. It is not a commitment to deliver any material, code, or functionality, and should not be relied upon in making purchasing decisions. The development, release and timing of any features or functionality described for Oracle's products remains at the sole discretion of Oracle.

EnterpriseOne Continuous Innovation

**Premier Support for EnterpriseOne 9.2
until AT LEAST**

2030

Focused Investing for Your Future

Enabling the Customer Journey into a Digital Enterprise



User
Experience



Digital
Technologies



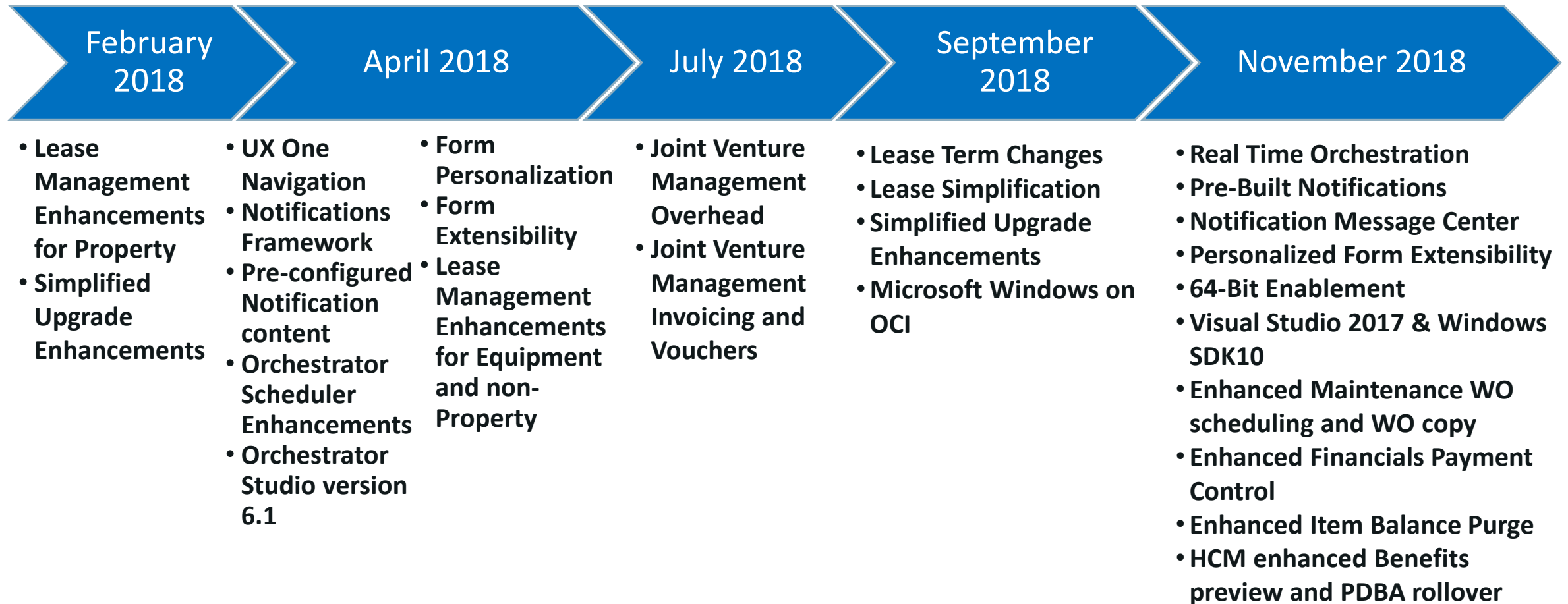
ERP



Operational
Simplification

JD Edwards EnterpriseOne Releases

2018 Feature Highlights – Release 9.2 Code Line



Platform Certifications, Security, Legislative & Regulatory Enhancements

Visit [LearnJDE.com](https://www.oracle.com/learn/jde) for details

Future EnterpriseOne Solutions

Planned

Planned and Research Highlights on 9.2 Code Line

Planned

ERP Modernization

- JVM Allocations
- JVM Operational Reporting
- JVM Cash Calls
- Dynamic File Formatter
- Enhanced Job Status Inquiry
- PDBA Filter & Search
- License Plate Picking Optimization
- Automatically Return Pick Date from ATP/CTP
- WO Activity Rules for Manufacturing
- WO Ledger for Manufacturing

Digital

Transformation

- Notification Multiple actions
- Orchestrator variables and date selection
- Orchestrator XML data format
- Orchestrator multiple messages and actions

Platforms

- Oracle DB 19c
- Oracle ATP
- JDeveloper, OAM, OIM 12.2.1.3
- BIP 12.2.1.4
- Microsoft Edge 42
- Apple iOS 12
- MAF 2.6

Operational Simplification

- Upgrade to multiple DB
- Customization Object Analyzer
- Form Extensibility
- Logic Extension
- Delivery of JD Edwards Trial Edition as a Container
- Orchestrator of Server Manager Rest

Research

- Adaptive Intelligence
- Expanded Delivery Methods
- Personalization Frameworks
- Experience Extension
- Easier Upgrades
- Guided Special Instructions
- Automated Patching
- JVM AFE's
- JVM Purge & Archive
- Withholding Tax on Taxable
- Fixed Asset Post Error Report

- One View Scheduler Automation and Simplification
- Automation for Batch & Queue Management
- Override Billable Unit Price to Zero for Service Parts
- G/L Batch Auditing
- Management of PM schedules
- Multi-currency Lease Accounting

- Global Lot Master
- Reverse Ship Confirm
- Base Price Interoperability
- Impact Analysis for Multiple ESUs
- Automate Job Creation
- VAT for R/E Billing
- Pre-Payroll DBA Auditing
- Asset Number in Multi-Voucher forms

- Smart Grid and Smart Search
- Ease of Access and Configuration
- Conversational Experience: Chat bots
- Augmented Reality
- Artificial Intelligence and Virtual Assistants
- Proactive Administration
- Centralized Administration

The above is intended to outline our general product direction. It is intended for information purposes only, and may not be incorporated into any contract. It is not a commitment to deliver any material, code, or functionality, and should not be relied upon in making purchasing decisions. The development, release and timing of any features or functionality described for Oracle's products remains at the sole discretion of Oracle.

JD Edwards Recent Innovations & Roadmap Details

A man in a dark suit and light-colored shirt is shown from the chest up, interacting with a futuristic, transparent digital interface. His right hand is extended, with his index finger touching a glowing point on a semi-transparent rectangular panel. Several other similar panels are visible in the background, some overlapping and some slightly offset, creating a sense of depth and a complex digital environment. The overall tone is professional and technological.

User Experience

Ways to Tailor JD Edwards



Configuration

Setup EnterpriseOne to meet the needs of the organization's business processes



UX One

Simplify, personalize and extend the user experience using JD Edwards User Defined Objects



Customization

Programmatically change forms, logic and data to solve company-specific business requirements

Lower

Cost

Higher

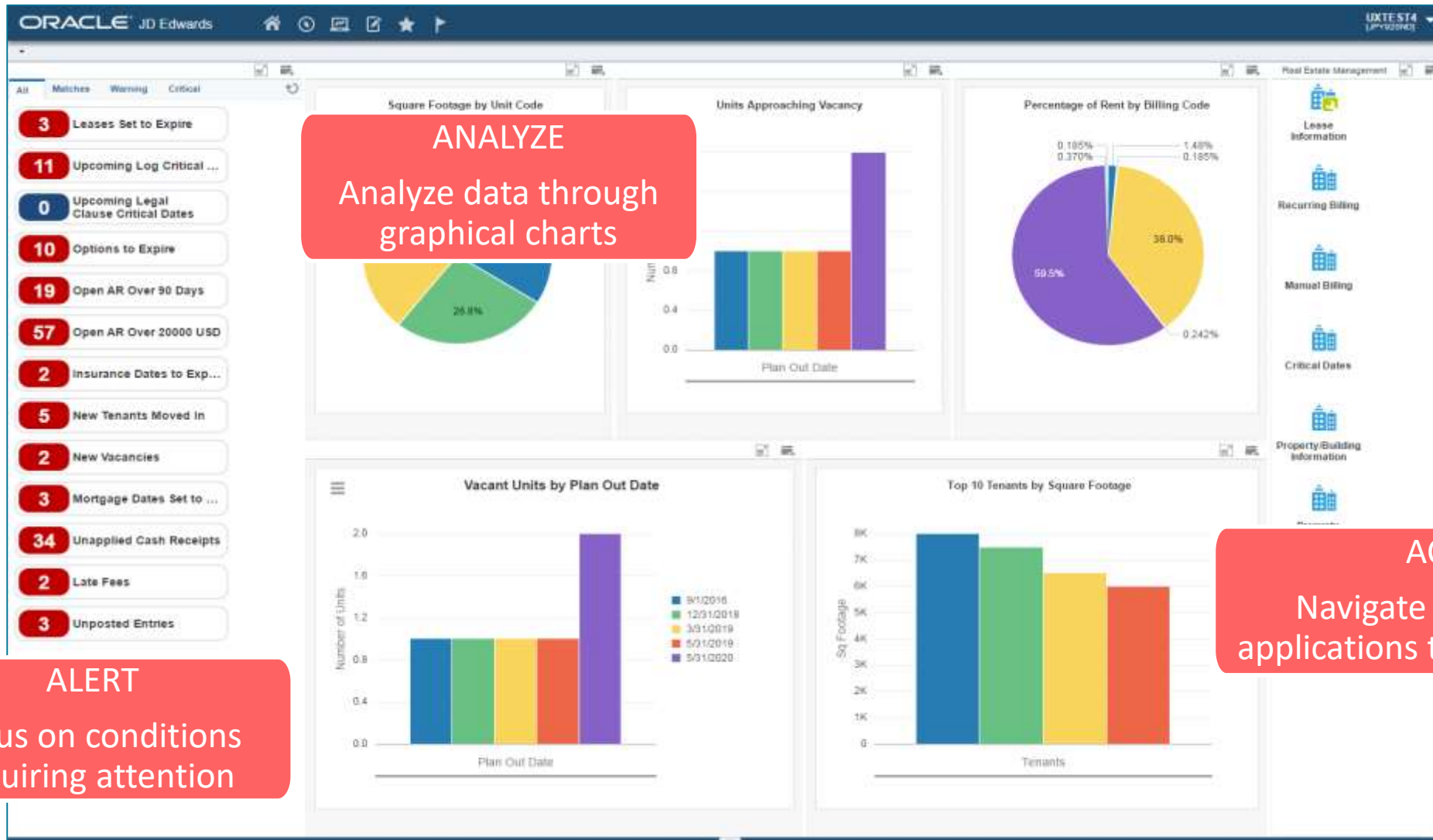
UX One encompasses these Personalizations

All User Defined Objects (UDOs) are managed with the same lifecycle tool



Query Manager One View CafeOne Watchlists Composed Pages Form Personalization List View Enterprise Search Orchestrator Studio Form Extension Notifications

UX One - Role Based Landing Page (52 Delivered)



ANALYZE

Analyze data through graphical charts

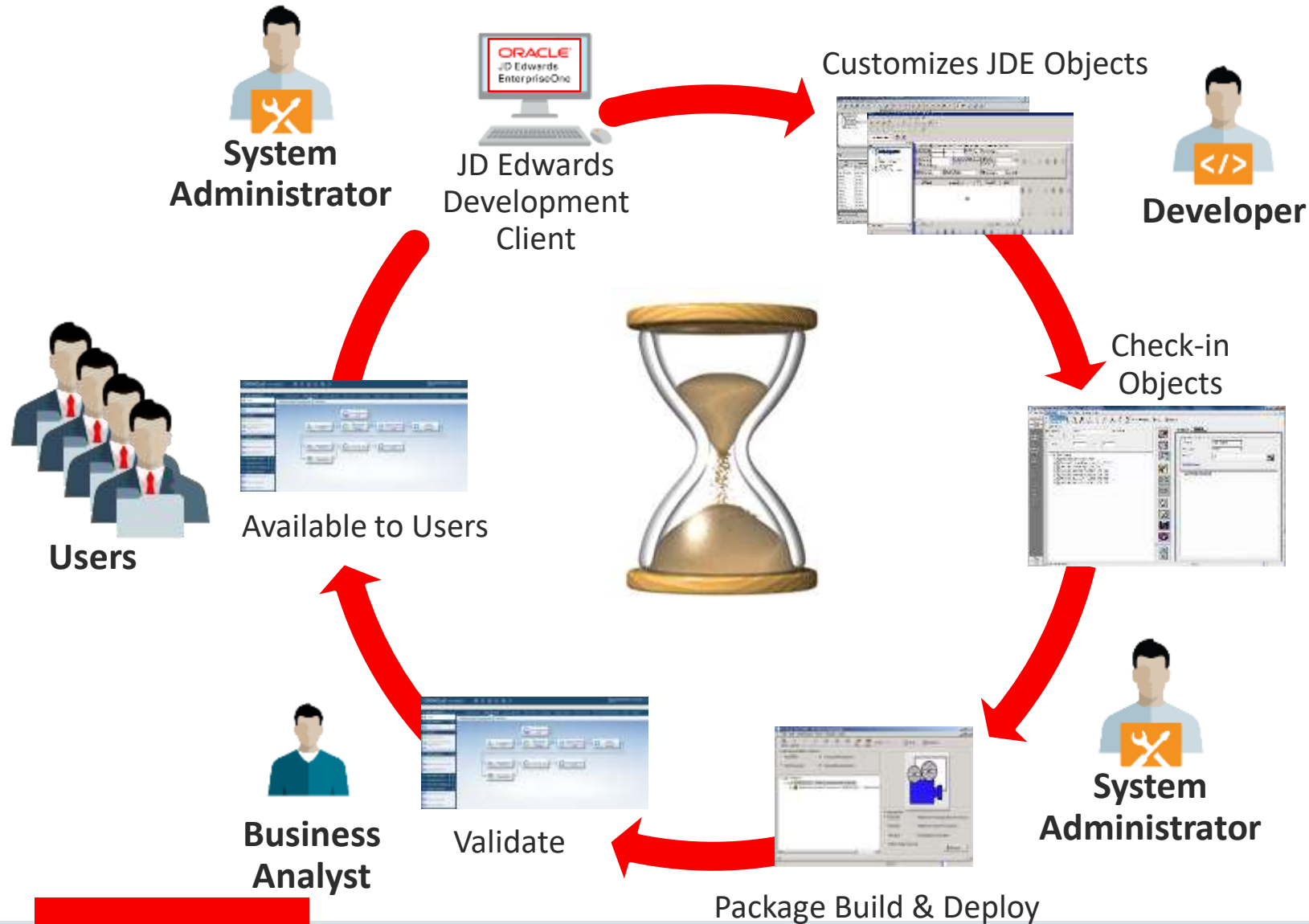
ALERT

Focus on conditions requiring attention

ACT

Navigate to source applications to take action

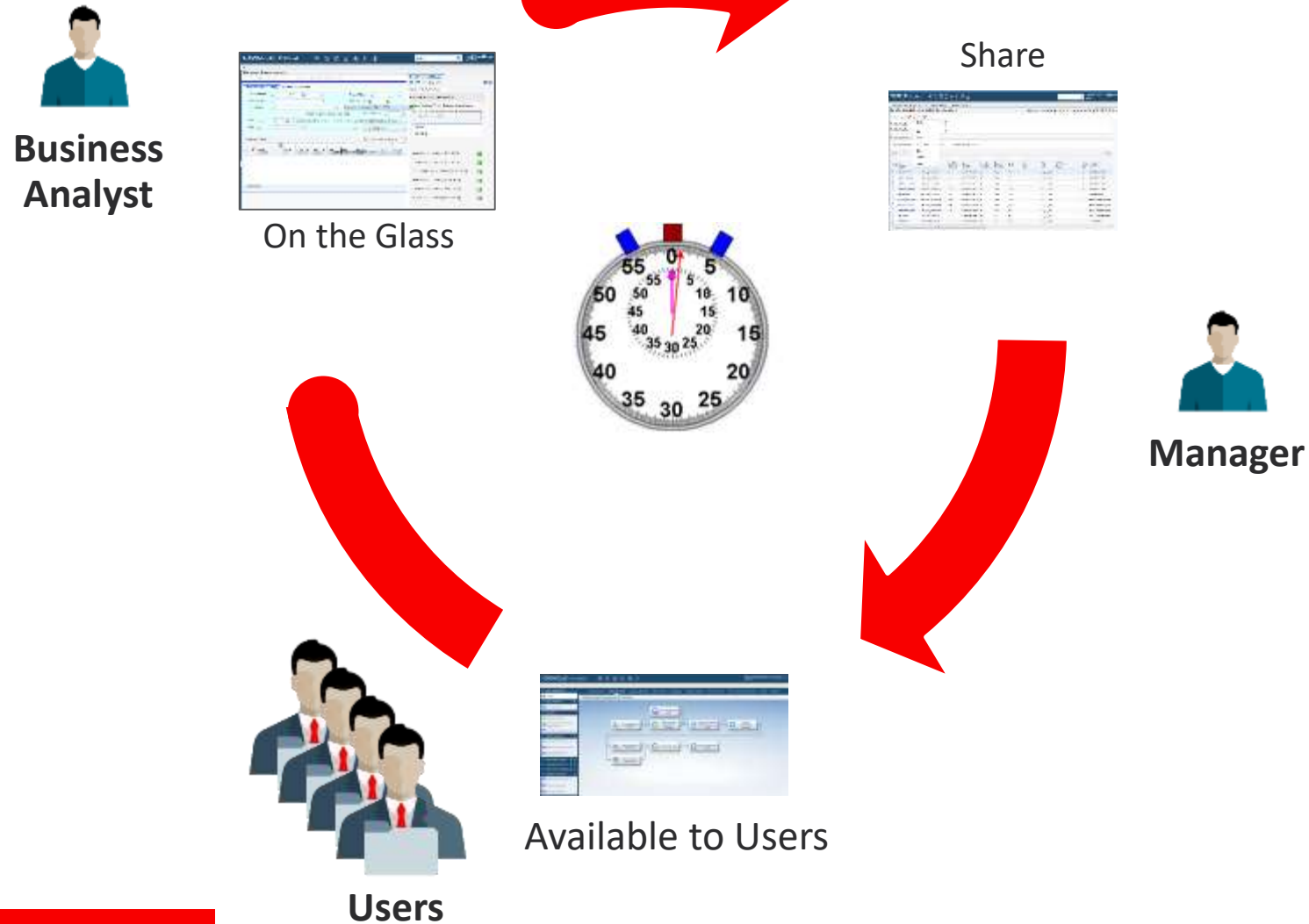
Traditional Customization Process



Challenges:

- ✓ Delayed time to market
- ✓ Rework
- ✓ Retrofitting
- ✓ Barrier to continuous adoption

UX One Framework Process



Solution:

- ✓ Immediately solves business problems
- ✓ No impact on an upgrade/patch
- ✓ Enables continuous adoption
- ✓ Timely delivery to users

JD Edwards UX One Customer Adoption

Customers Success



THE DIXIE GROUP

Composite Pages

“Users love the Composite pages we’re using for Receiving and Purchasing. They are easy to create, they speed up entry, and it gives them visibility to the process flow.”



E1 Pages, Watchlists & CafeOne

“We needed to provide a more modern user experience by restructuring menus and implementing E1 pages, Watchlists, and CafeOne.”



With us, it's personal.™

Watchlists

“Watchlists have simplified the process for vendor management by tracking vendor’s liability insurance to ensure they are compliant.”



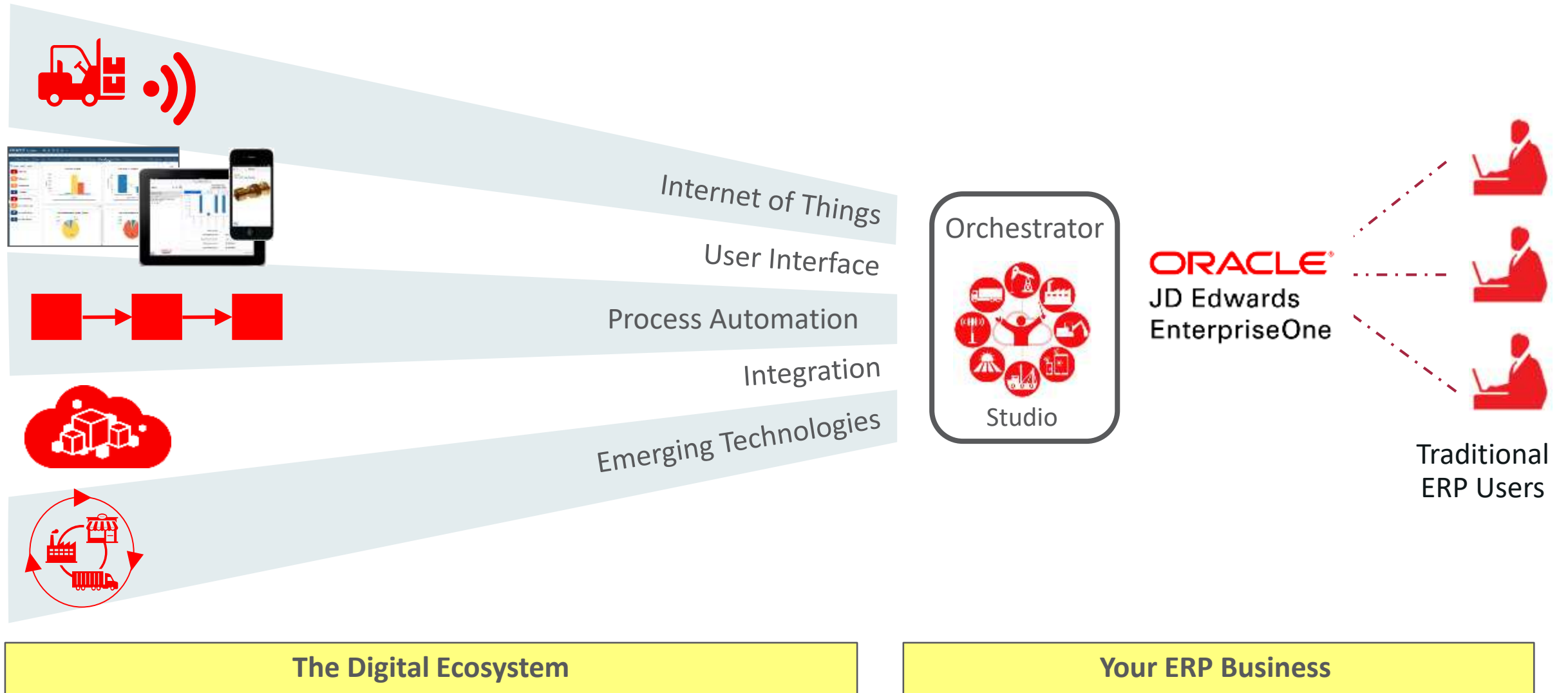
CafeOne

“Using CafeOne with Address Book showing Google Maps to help with directions and make sure trucks can access their store.”



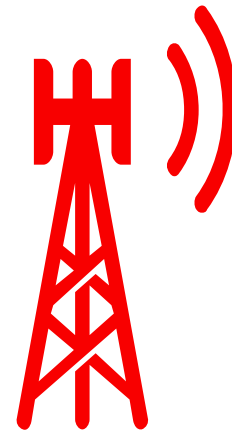
Digital Technologies

Orchestrator – Gateway to Digital Transformation

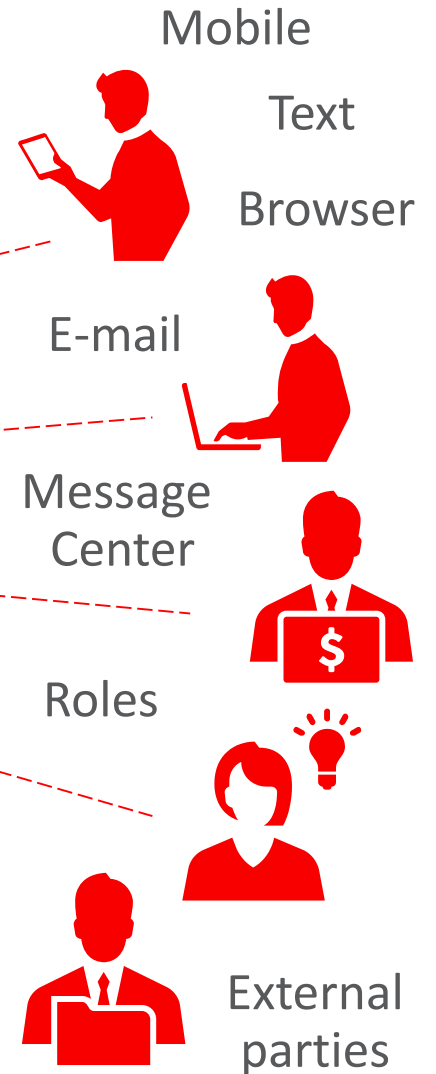
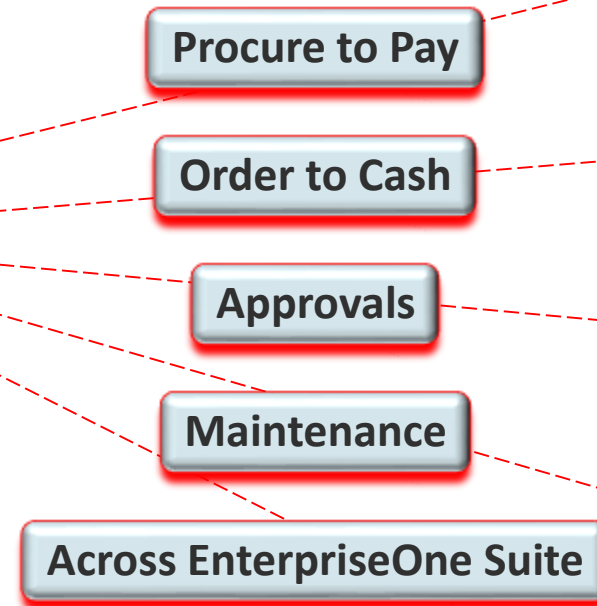


EnterpriseOne Notifications

Stay in touch with your business and act fast



Notifications



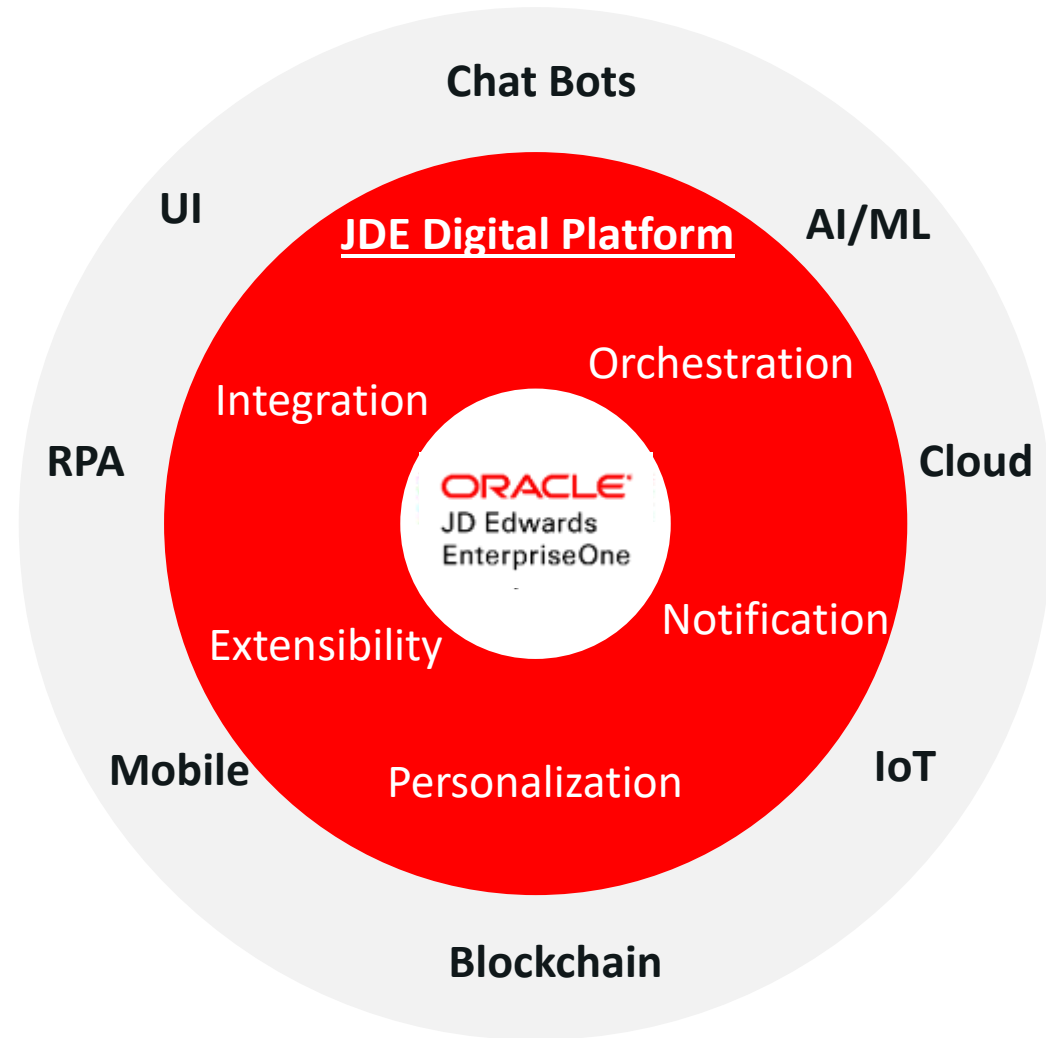
Easy to create your own.

Immediate business value with **64** pre-configured notifications.

JDE Digital Transformation

Transform Your Processes

- Build digital capabilities into your processes
- Automation of manual tasks
- Eliminate errors
- Streamline processes
- Extend enterprise to mobile workers, field staff, machines, and suppliers



Manufacturer leverages the JD Edwards Orchestrator to deploy BOT which automates routine financial transactions

Accounting BOT eliminates manual data entry and errors



STANLEY
Engineered Fastening

Stanley Fasteners
Chesterfield • Michigan

Old Way

- Corporate creates 100s of G/L entries sent to the divisional level via spreadsheet
- Spreadsheets manually uploaded to the divisional Financial system

New Way

- The Finance Robotics Process Automation Team automated the process leveraging the JD Edwards Orchestrator tool
- Automation Anywhere was picked to create Bots to replace this manual work
- Large and tedious data inputs can be done in a matter of minutes

"We no longer have to type the data and just saved several minutes for each transaction"

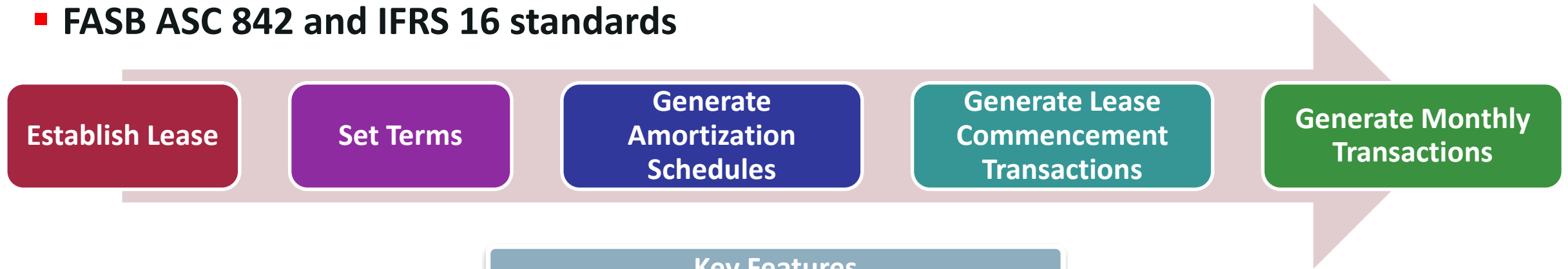


ERP

Lease Accounting For Property and Non-Property

Meeting Your Global Accounting Requirements

- Simplify and automate global lease administration
- FASB ASC 842 and IFRS 16 standards



Key Features

- Lessee accounting for property and non-property leases
- Lease terms change management
- Simplified lease management

- Lessor accounting (FASB 13) for property leases
 - straight line rent
- Revenue recognition for lease management companies

Available with EnterpriseOne 9.1 and 9.2

Sample Recent Application Enhancements

Capital Asset Management

Preventive Maintenance Schedules

Simplified Work Order Copy

Financials

Payment Control Groups *

Configure Bank Account Required Fields

Manufacturing

Order Activity Rules *

Automatically Attach Parts List & Routing

Human Capital Management

Benefits Preview *

Paid Sick Time Compliance

Sales

Refresh Inventory Commitments

Header to Detail Defaults in Sales Order Entry

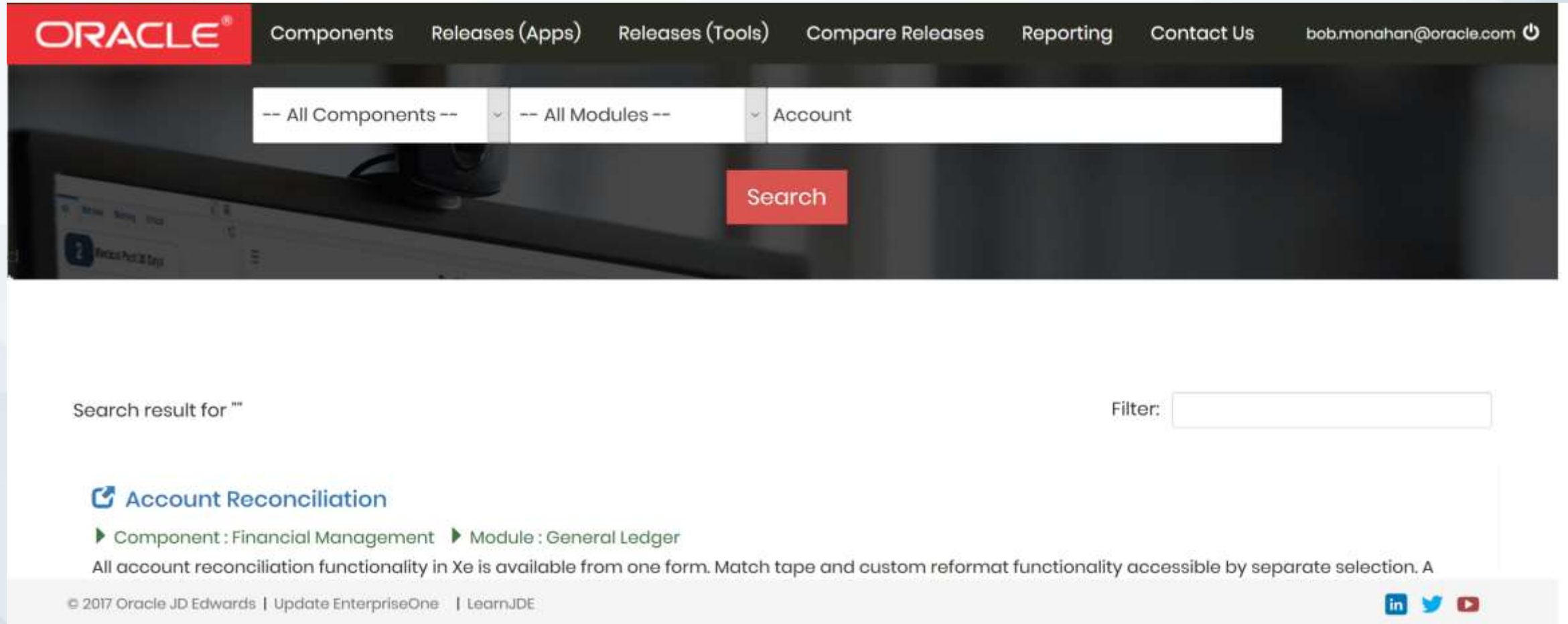
Procurement

Basket Pricing in Procurement

Voucher Match for Split Lines BSSV *

LearnJDE - Product Catalog

Contains feature net changes by and between releases. Search by release, module, feature, etc.
Export results to multiple common formats. Replaces Release Notes, eUVP, Statement of Direction, etc.



The screenshot shows the Oracle LearnJDE Product Catalog search interface. At the top, there is a navigation bar with the Oracle logo and links for Components, Releases (Apps), Releases (Tools), Compare Releases, Reporting, and Contact Us. The user's email address, bob.monahan@oracle.com, is displayed on the right. Below the navigation bar, there is a search form with three dropdown menus: "-- All Components --", "-- All Modules --", and "Account". A red "Search" button is positioned to the right of the dropdowns. Below the search form, the text "Search result for "" is displayed on the left, and a "Filter:" label is followed by an empty input field on the right. The search results section shows a link for "Account Reconciliation" with a blue icon. Below this link, the text "Component : Financial Management" and "Module : General Ledger" is displayed. A description of the functionality follows: "All account reconciliation functionality in Xe is available from one form. Match tape and custom reformat functionality accessible by separate selection. A". At the bottom of the page, there is a footer with the copyright notice "© 2017 Oracle JD Edwards | Update EnterpriseOne | LearnJDE" and social media icons for LinkedIn, Twitter, and YouTube.

ORACLE® Components Releases (Apps) Releases (Tools) Compare Releases Reporting Contact Us bob.monahan@oracle.com

-- All Components -- -- All Modules -- Account

Search

Search result for ""

Filter:

[Account Reconciliation](#)

► Component : Financial Management ► Module : General Ledger

All account reconciliation functionality in Xe is available from one form. Match tape and custom reformat functionality accessible by separate selection. A

© 2017 Oracle JD Edwards | Update EnterpriseOne | LearnJDE

A close-up photograph of a person's hands holding a large, blue, cloud-shaped object. The object has a gradient from light blue to dark blue. The person is wearing a white lab coat. The background is blurred.

Operational Simplification

Upgrade Resources on LearnJDE.com

Take Advantage of Enhancements and Modern User Interface with Upgraded System



Continuous Innovation

Continuous Delivery gives you a tool to better align IT and the line of business organizations you support by scheduling the adoption of enhancements based on how you best serve the business rather than on an end-of-support date.



Minimize Business Disruption

JD Edwards upgrade framework preserves business configuration, business data, and minimizes the impact to customizations. This framework enables to release 9.2 in weeks with not business disruption.



Reduced Level of Effort

JD Edwards has streamlined the upgrade framework to include upgrading to a code current environment with the latest Tools release and application enhancements, preserve more customizations, and minimize cut-over times. This reduces the time and effort to upgrade to weeks and a reduced cost.



Accelerate Adoption

With JD Edwards upgrade framework and continuous delivery model, customers can leverage new capabilities like mobile, UX One and Notifications to solve business problems in days and weeks instead of long and costly implementation projects.

Get Started

- > [Sample EnterpriseOne Business Case](#)
- > [Product Catalog](#)
- > [Whitepaper: Upgrade or Rip-and-Replace Your Enterprise Resource Planning Solution](#)
- > [Oracle Technical Catalog](#)
- > [White Paper: E1 Strategy Council Upgrade Best Practice](#)
- > [Platform Statement of Direction](#)

Implement

- > [Information Center: JD Edwards EnterpriseOne 9.2](#)
- > [Get Proactive with JD Edwards](#)
- > [Presentation: JD Edwards EnterpriseOne System Extensibility](#)
- > [9.2 Business Process Models](#)
- > [Certifications \(Minimum Technical Requirements\)](#)
- > [Update Center for JD Edwards](#)

Use

- > [Upgrading EnterpriseOne Tools Release for Server Manager, Deployment Server, Enterprise Server and HTML Server - 9.2.x and Above](#)
- > [Installation and Upgrade Documentation Release 9.2.x](#)
- > [Patching & Maintenance Advisor: Software Updates for JD Edwards \(JDE\) EnterpriseOne 9.0, 9.1 and 9.2](#)
- > [Server Manager Guide](#)

Medical Device Manufacturer with 3,500 Users Globally Upgrades to 9.2 in 6 Months

Single Instance with Multiple Time Zones and Languages



Edwards

Edwards Lifesciences

Irvine • California

- Used Simplified Upgrade
- Seven manufacturing locations globally
- Used OATS for testing and UPK for training
- Users like the new user interface: advance queries, search history, favorites
- Exploring E1 pages and looking at One View Reporting
- Implementing Mobility

Lowering the Total Cost of Ownership

Enabling Customers to Focus on the Business

Recent Highlights

- Object Tracking and Usage
- System Health Checks
- User Defined Object management
- Code Current Upgrades

Planned and Researching

- Personalization improvements (planned)
- System self monitoring (planned)
- Automated patching (planned)
- Elastic deployment – containers (research)



Continued Low Total Cost of Ownership and Simplification on your JD Edwards platform!

JD Edwards and Cloud

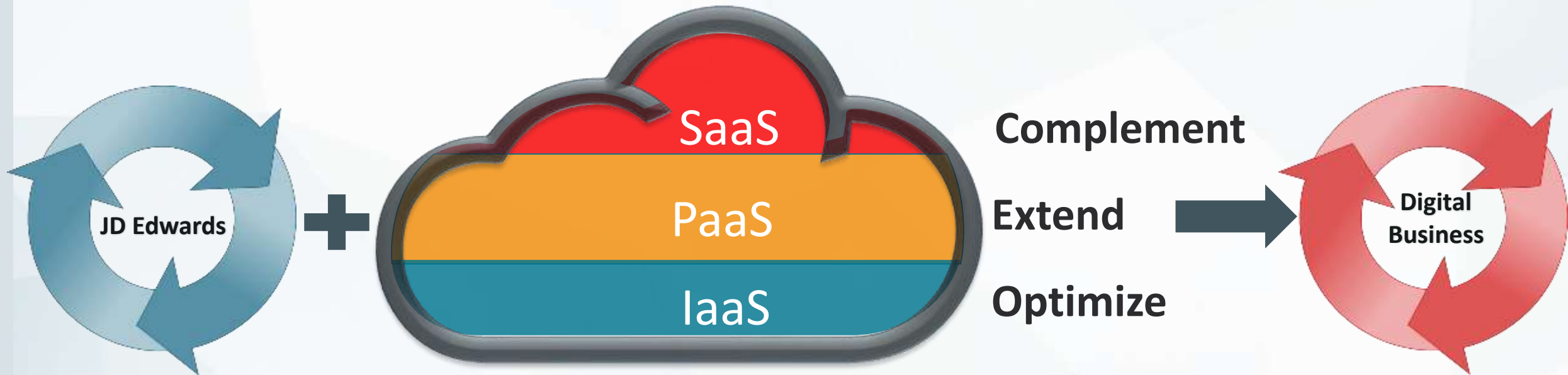
Oracle Cloud



Oracle Cloud offers
CHOICE and **CONTROL**,
enabling your journey with
complete, open, secure
solutions for business
transformation

JD Edwards Practical Paths to Oracle Cloud

Hybrid by Design for CHOICE and CONTROL



Use Cases for JD Edwards Customers

Extend Current Data Center

- Transient workloads (Training or ad-hoc testing, evaluation of new versions, gap analysis)
- Rapid implementation for acquired subsidiary, geo expansion or separate LOB

Disaster Recovery

- “On-premises to cloud” or “cloud-to-cloud”
- Persistent storage back up; full application stack DR
- Pay only when you need & use it



**Reduce Cost &
Modernize IT**

Non Critical Workloads

- Easily spin up dev / test environments
- Effectively share resources
- Better ROI on cost & utilization

Production Workloads

- Get out of data center business
- Reduce risk of technology obsolescence & limit liability
- OpEx instead of CapEx model

Move JD Edwards to Oracle Cloud Infrastructure

JDE on the Oracle Cloud Benefits Your Business Without Business Process Change

ORACLE®

JD Edwards
EnterpriseOne

ORACLE®

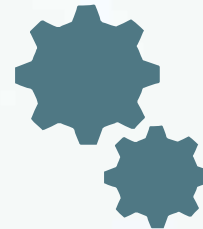
Cloud



Leverage the
JD Edwards you **OWN**

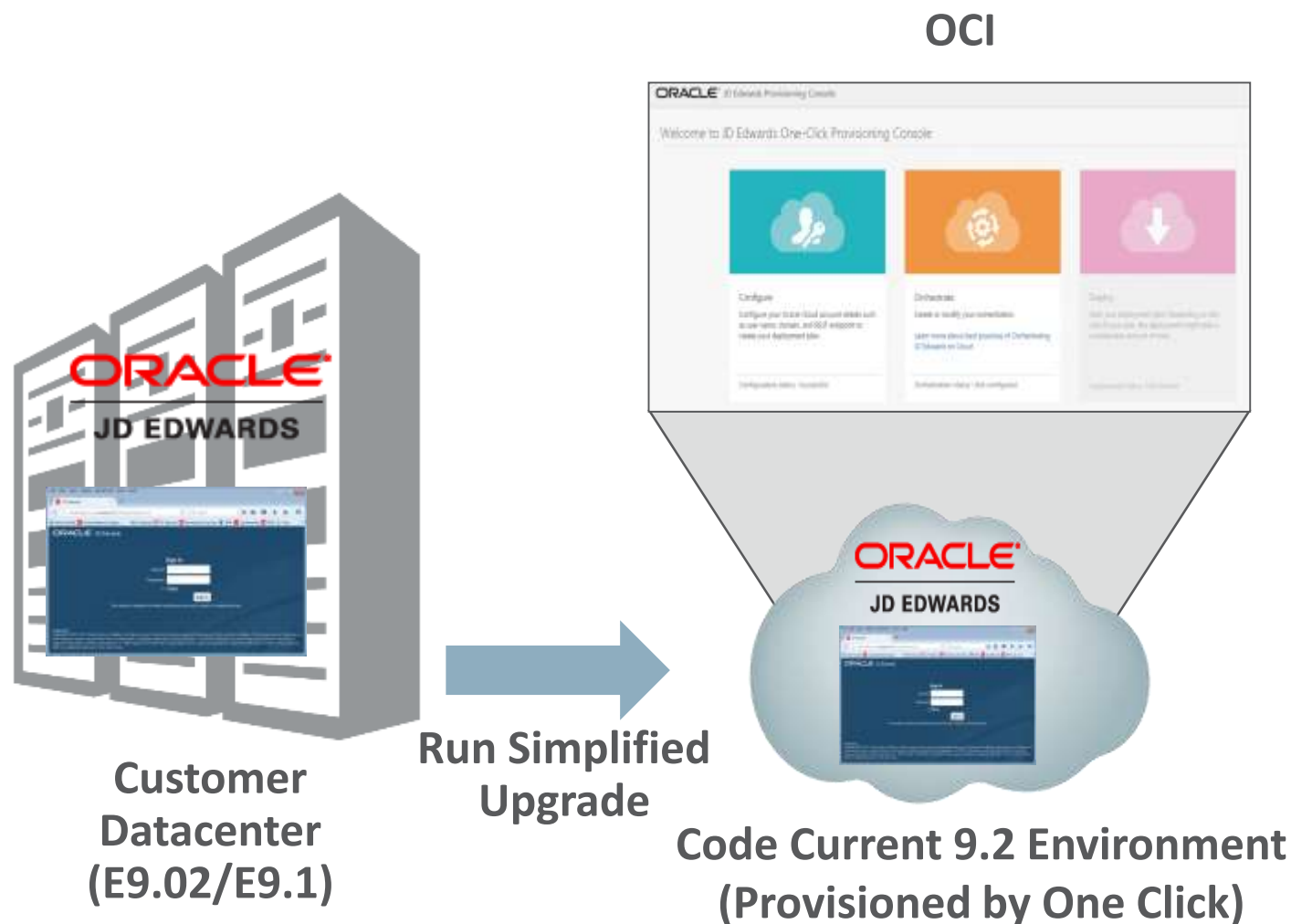


Run the
JD Edwards you **KNOW**



Differentiate through the
JD Edwards you **CONFIGURED**

Move & Improve: With Simplified Upgrade



Simplified Upgrade using One-Click Target

- One-Click Provisioned Instance as base for 9.2 Upgrade
- No need to Update (Apps ESUs & Tools Release) as Part of Upgrade
- Utility to Extract & Import
- Support for existing 9.02 & 9.1 environments
- Support for Oracle Red Stack Only (Linux/Oracle DB) and Microsoft (SQL Server)
- Move to Cloud and Upgrade to 9.2 as a single process

TruGreen Saves 30% by moving JD Edwards to Oracle Cloud



“Our users are ecstatic with the performance. We’re one month in and already saving relative to our previous solution.”

- Cliff Lee, Director of Corporate Systems, TruGreen



Key Drivers:

- Long term service contract for out-of-support solution stack was ending
- Needed a nimble, scalable solution, taking future growth into consideration

Value Solution & Results

- Replaced outdated JD Edwards, Websphere, DB2 and AIX Stack with JD Edwards E1 9.2 on OCI platform
- Improved agility, service and performance
- Fastest average ERP query response time amongst all Velocity customers: 0.07 seconds per user interaction

Serva Group, LLC modernizes JDE E1 infrastructure with OCI



A division of EnTrans International, SERVA specializes in the design, manufacture, and installation of equipment and technologies for energy markets across the world.

Oracle Partner **Denovo**

Key Drivers:

- Local data center was closed down and JD Edwards moved to Oracle Cloud to ensure reliable connection to all sites
- Fewer skilled resources to manage technology
- Required a disaster recovery solution

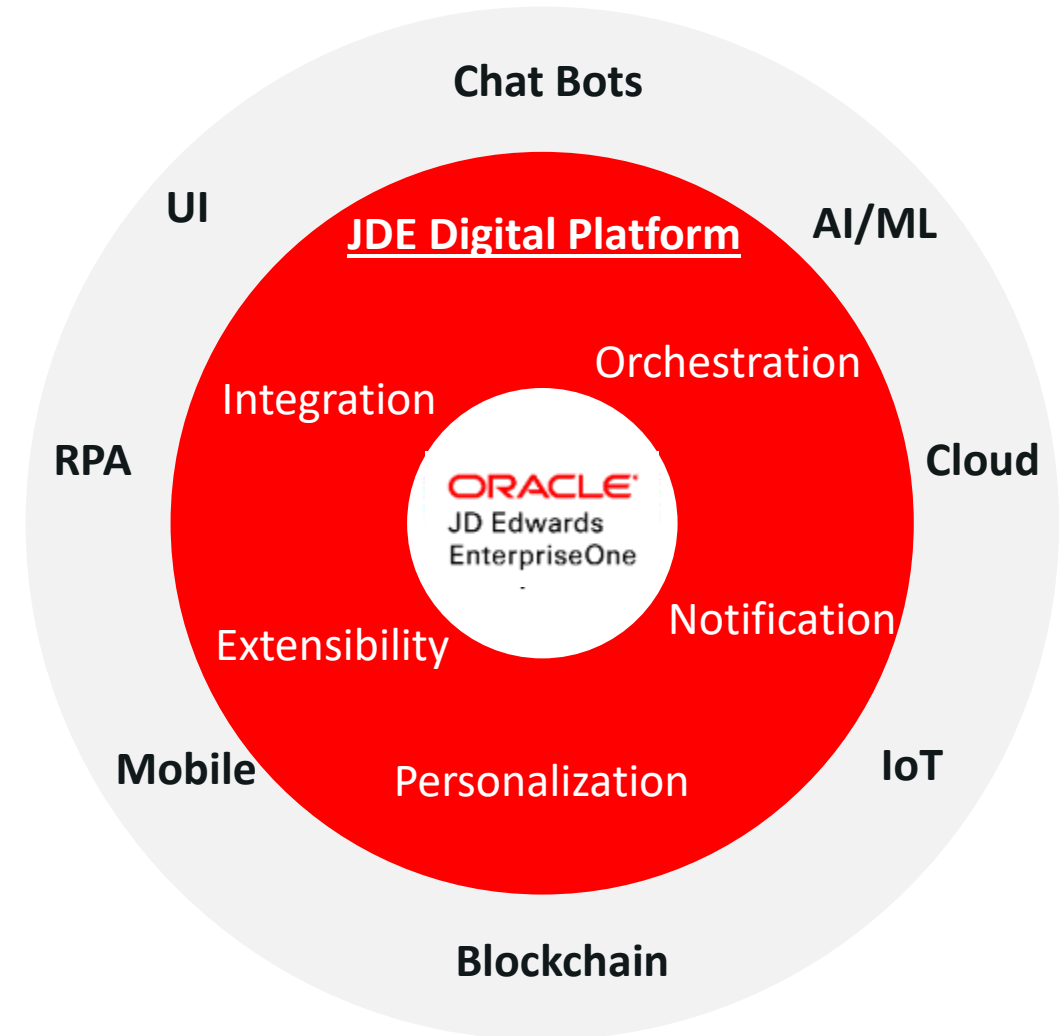
Value Solution & Results

- Lower TCO
- Eliminated infrastructure management complexity
- Single source for infrastructure and application needs
- Leveraged Denovo's MSP relationship with Oracle to easily move into Oracle Cloud Infrastructure

Summary and Call to Action



- You Dream
- You Plan
- You Innovate
- You Make it Happen



Be Informed, Get Connected, and Share!



[@OracleJDEdwards](#)

[@Lyleekdahl](#)

[@garygrieshaber](#)

[@monahanbob](#)

[@wardquarles](#)



[JD Edwards
Professionals](#)



[OracleJDEdwards](#)



[Oracle JD Edwards Channel](#)



My Oracle Support
[Communities](#)

ORACLE®