

ORACLE®



JD Edwards – A Platform for Innovation You Make it Happen

Lyle Ekdahl
Senior Vice President
JD Edwards
August 20, 2018

InFocus18 Preview – You Make It Happen!

- **Your Questions Answered**
 - JD Edwards in the Exhibitor Showcase
 - Executive Q&A – Tuesday at 12:15pm during lunch
- **Be Inspired**
 - JD Edwards Product Show – Located in Foyer A
 - Ideathon – Tuesday at 11:15am
- **Learn How**
 - JD Edwards led Product Sessions – Recommended in my Keynote
 - Customer led Sessions – See what your peers are doing with 9.2

Keynote Agenda

- **JD Edwards Today and into the Future**
- **Our EnterpriseOne Product Investments**
- **You Make It Happen – Product Demonstrations**



EnterpriseOne Continuous Innovation

Premier Support for EnterpriseOne 9.2
until AT LEAST

2030

JD Edwards EnterpriseOne Product Roadmap

Want to see our Product Roadmap?

Visit [MyOracleSupport](#)

The above is intended to outline our general product direction. It is intended for information purposes only, and may not be incorporated into any contract. It is not a commitment to deliver any material, code, or functionality, and should not be relied upon in making purchasing decisions. The development, release and timing of any features or functionality described for Oracle's products remains at the sole discretion of Oracle.

Customer Success Trends

Four Patterns Gaining Momentum with our Customers



Migration from World to EnterpriseOne

- Standardization of industry processes
- A proven platform for growth



Platform for Innovation

- Upgrade to EnterpriseOne 9.2
- Embrace digital technologies including Mobile, IoT, and Automation



Platform for Expansion and Extension

- Adopting JD Edwards products that support their changing businesses

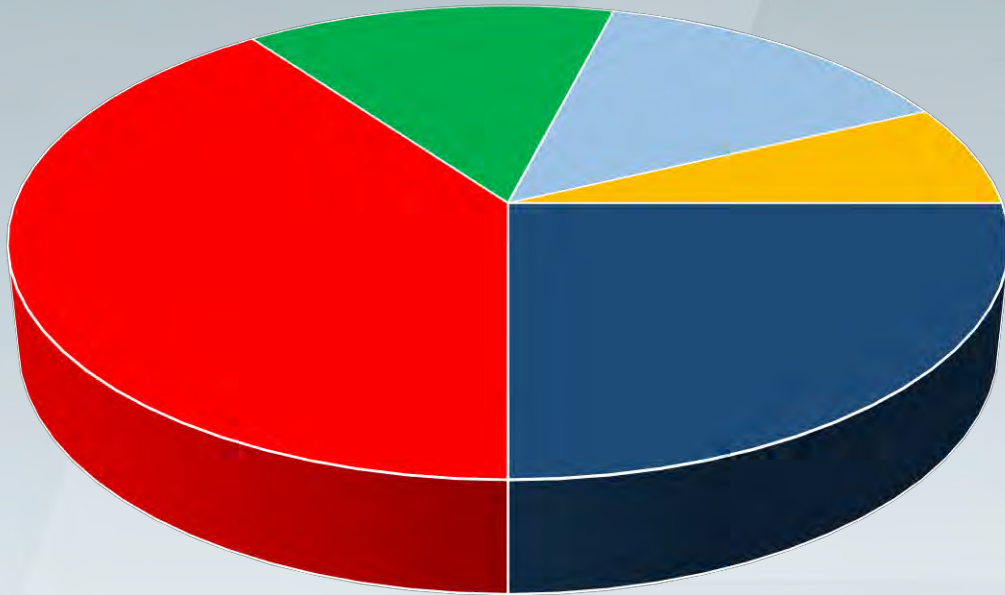


JD Edwards & Cloud as Platform Hub

- Hybrid Cloud – On-premises, IaaS, PaaS and SaaS

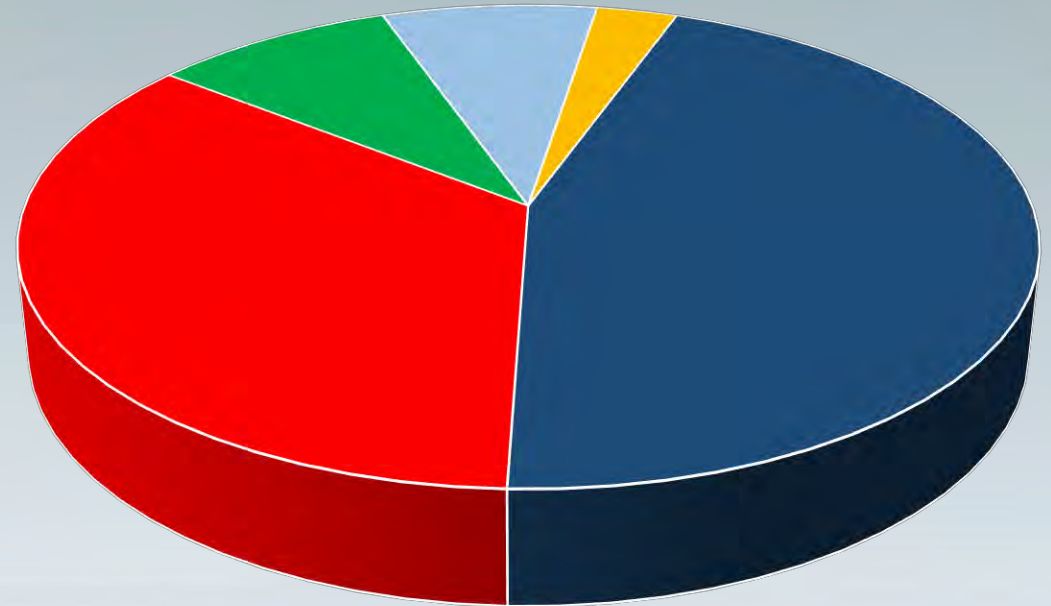
JD Edwards Install Base by Release

InFocus 2017



■ 9.2 ■ 9.1 ■ Other E1 ■ W 9.x ■ Other World

InFocus 2018



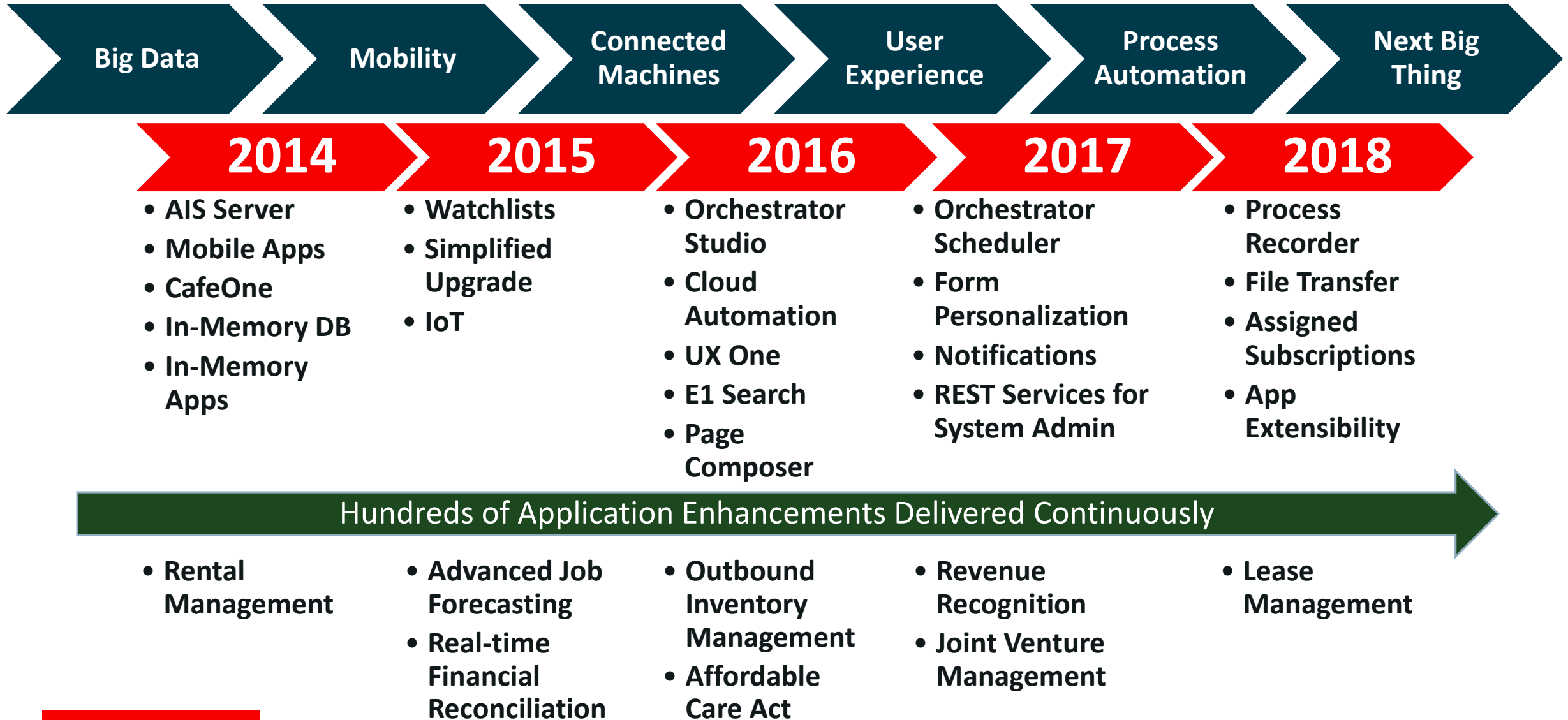
■ 9.2 ■ 9.1 ■ Other E1 ■ W 9.x ■ Other World

What does this mean to you?

- World customers continue migrating to EnterpriseOne
- Extended Support for EnterpriseOne 9.0 ends November 2018
 - Transitions to Sustaining Support
 - No new updates, fixes, or security alerts
 - No tax, legal, or regulatory updates
 - Market Driven Support is an option for 1 year
- EnterpriseOne 9.1 entering its second year of extended support
- 9.2 is the Continuous Innovation Release with Support to AT LEAST 2030
- 9.2 is where you want to be!

9.2

Evolutionary Vision - Continuous Enhancements

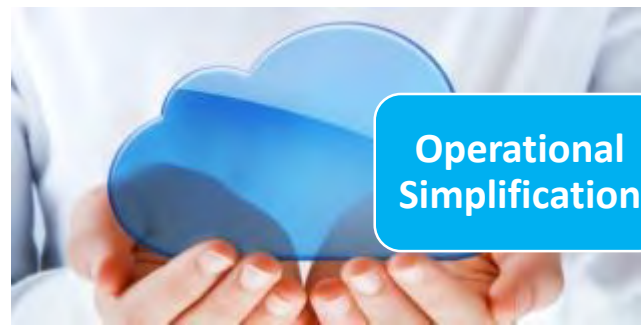


JD Edwards Investing for Your Future

Enabling the Customer Journey into a Digital Enterprise



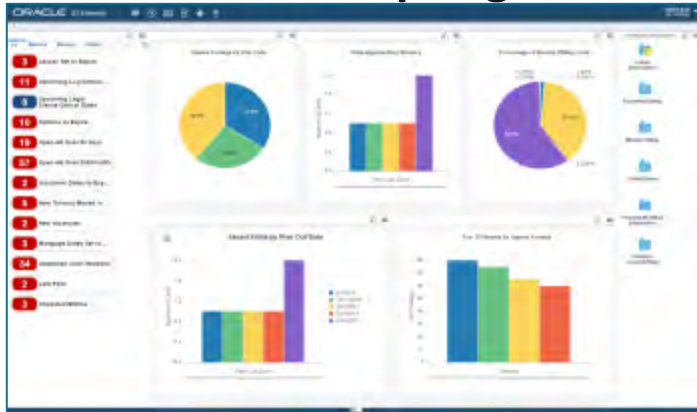
- **Personalized User Experience**
 - **UX One, Personalization frameworks**
- **Digital Technologies for Business Transformation**
 - **Mobility, IoT, Orchestrator**
- **ERP Innovations that Differentiate your Business**
 - **Process Automation**
- **Operational Simplification**
 - **Cloud and On-Premise, System Admin**



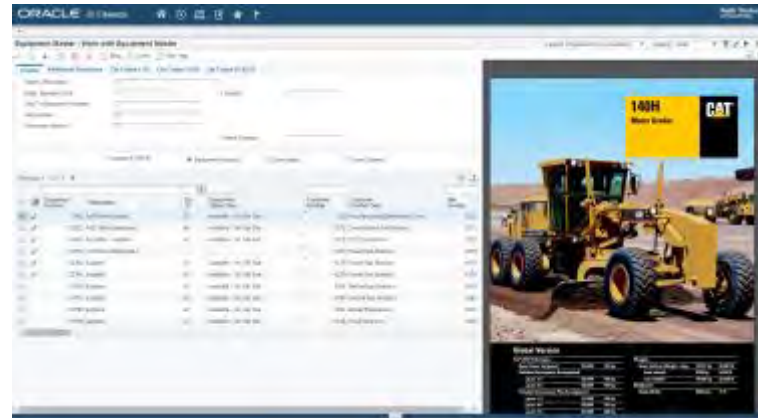
UX One User Experience – Leveraging Frameworks

Personalization and Configuration Over Customization

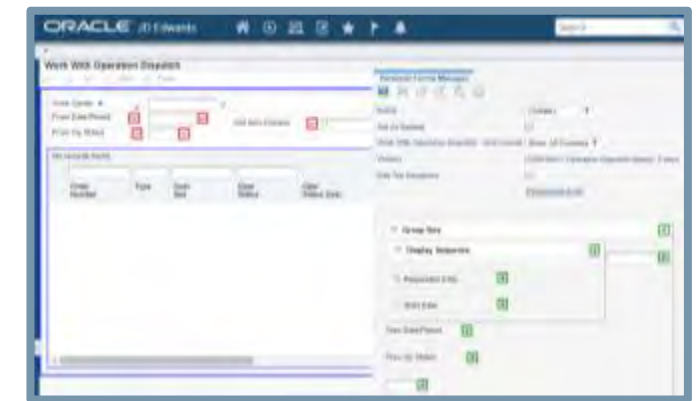
Page Composer Watch lists & Springboard



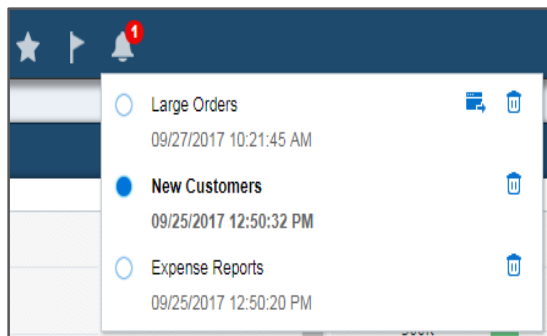
CafeOne



Form Personalization



Notifications



List View Grid Formats

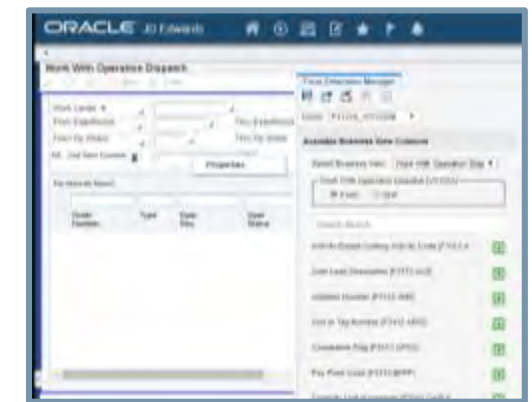
The screenshot displays the Oracle List View Grid Formats interface, which is used for viewing and managing a list of equipment work orders. The table below shows the data presented in this view.

Equipment Number	Work Order Number	Work Order Description	Work Order Status	Work Order Type	Work Order Category
481143	WM	Replace Intake Filters	WO St MA	MWO Approved	
481151	WM	Replace Dryer Filter	WO St MA	MWO Approved	
481188	WM	Lubricate Air Compressor	WO St MA	MWO Approved	
481178	WM	Clean and Inspect Spray	WO St MA	MWO Approved	
481188	WM	Inspect Exhaust Fan Motors	WO St MA	MWO Approved	

Search



Form Extensions



InFocus Sessions for UX One

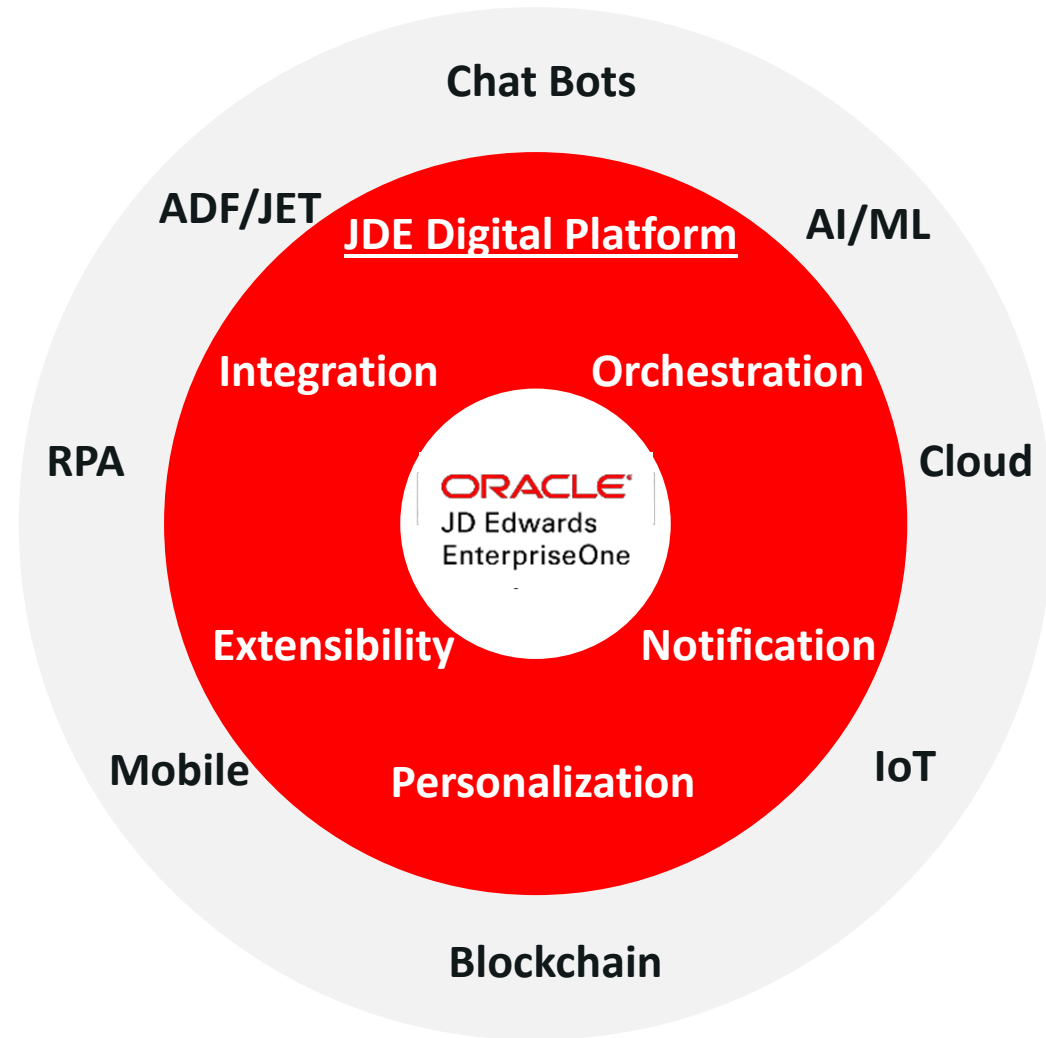
5

- 5 sessions on UX One
 - A UX One session every day of the conference!
- See UX One at the Product Show

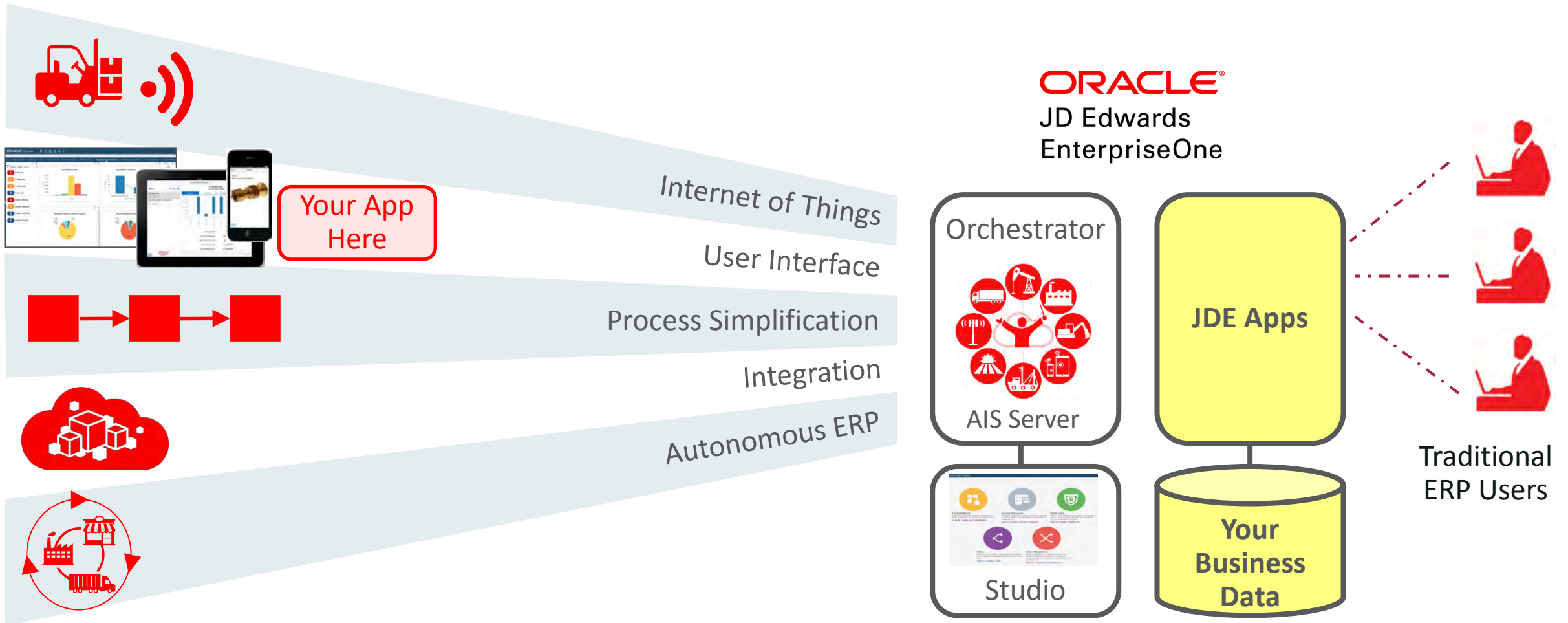
JDE Digital Transformation

Transform Your Processes

- Automation of manual tasks
- Eliminate errors
- Shorten cycle times and improve processes
- Personalization rather than customization
- Extend to mobile workers, field staff, machines, and suppliers



Orchestrator – A Gateway to Digital Transformation



InFocus Sessions for Orchestrator

2

- **2 sessions on Orchestrator**
 - Both sessions are on Wednesday
- **See Orchestrator at the Product Show**

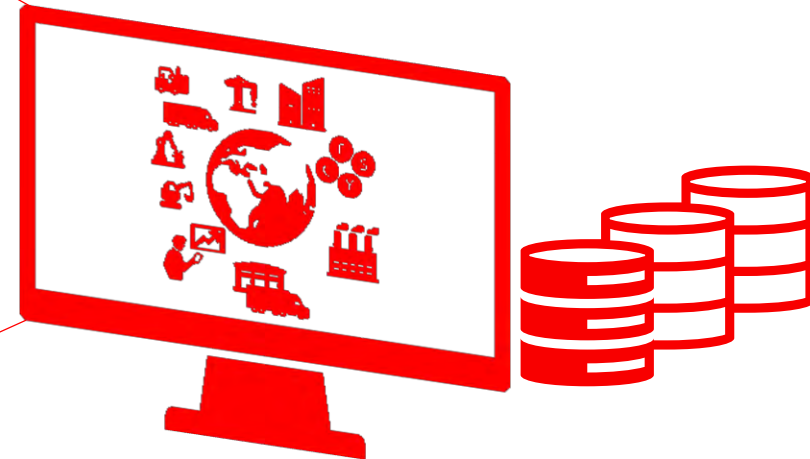
Your JD Edwards Data Reflects Your Business

Know what is going on in your business.



What happens here...

ORACLE®
JD Edwards
EnterpriseOne

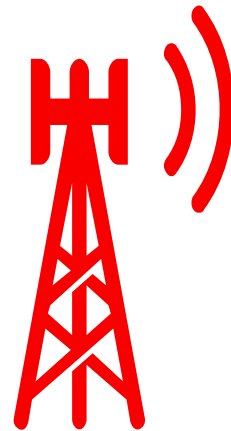


...is recorded here.

EnterpriseOne Notifications

Stay in touch with your business and act fast

ORACLE®
JD Edwards
EnterpriseOne



Notifications

Strategic Orders

Production exceptions

Equipment tolerances exceeded

Forecasted project delays

Health and Safety Issues

Mobile

Text

Browser

E-mail

Message
Center

Roles

External
parties

Easy to create your own.

Immediate business value with **35** pre-configured notifications.

Notification and Orchestrator Enhancements

Planned

- **Message Center**

- **Notifications and traditional Work Center messages**
- **Ability to search, sort and group**

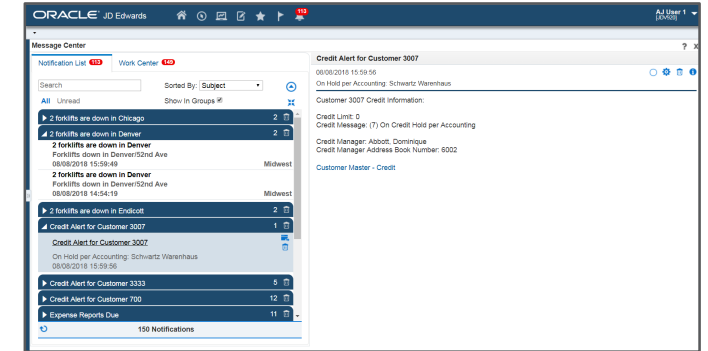
- **Orchestrator Monitoring**

- **Health of orchestration at a glance**
- **Improved diagnostics**

- **Real Time Orchestrations**

- **Launch an Orchestration from a Table Event**
- **Preform actions real time**

Message Center



Orchestrator Monitor



Launch from a Table Event



InFocus Sessions for Notifications

2

- **2 sessions on Notifications**
 - Both sessions are on Tuesday
- **See Notifications at the Product Show**

Lease Accounting For Property and Non-Property

- Ability to manage leases per FASB ASC 842 and IFRS 16 standards
- Simplifies and automates lease administration
- Available for EnterpriseOne releases 9.1 and 9.2

Available *

- ✓ Revenue Recognition for Real Estate
- ✓ Lessor Accounting (FASB 13) for Real Estate - Straight Line Rent
- ✓ Lessee Accounting for property
- ✓ Lease Accounting for non-property

Planned *

- ✓ Lease term change management
- ✓ Lease simplification

Roadmap subject to change without notice. The above is intended for information purposes and may not be incorporated into a contract.

Joint Venture Management

Use Joint Venture Management to:

- Maintain partner division of interest
- Distribute costs & revenue
- Bill and pay partners
- Provide operational and financial reports

Available with JD Edwards Financials



Engineering and Construction



Oil and Gas



Real Estate



Agribusiness



Other industries

InFocus Sessions for Lease and Joint Venture

1

- **1 session each for Lease Accounting and Joint Venture**
–Both sessions are on Tuesday
- **See Lease and Joint Venture at the Product Show**

Upgrade Simplification

Remove time and effort

- Simplify provisioning the 9.2 environment
- Code Current Target (Apps and Tools)
- Reduce Retrofitting
- Move to OCI and Upgrade in single process



Lowering the Total Cost of Ownership

Enabling Customers to Focus on the Business

- System Health Checks
- Object Tracking and Usage
- Manage User Defined Objects
- 64 Bit Enablement



Have cloud application advantages of low total cost of ownership and continuous innovation with your existing JD Edwards platform!

InFocus Sessions on Operational Simplification

7

- **7 sessions that support our Operational Simplification**
 - Sessions every day of the conference
- **Meet our experts in the Product Show**

JD Edwards Product Show at InFocus18

- Product Show starts Monday evening in the Exhibitor Showcase
- Tuesday and Wednesday meet our JDE experts in Foyer A
- Schedule of product demonstrations is available in your Show Guide and posted near the education sessions

meet the
experts

- You Dream
- You Plan
- You Innovate
- You Execute



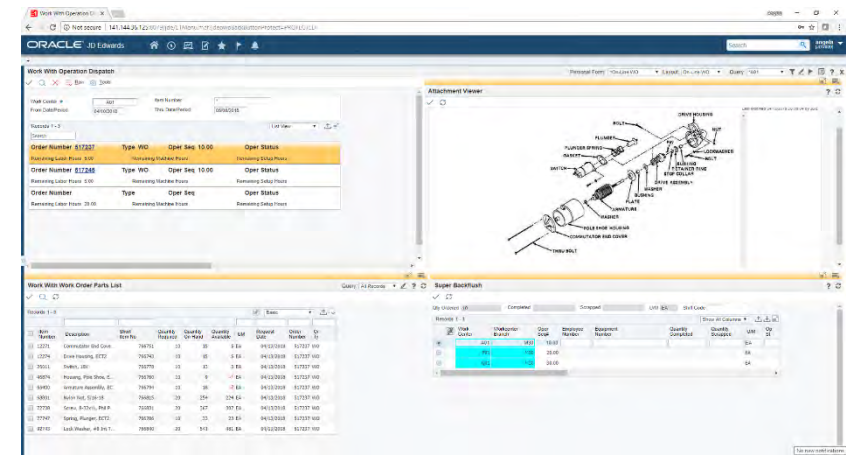
- You Make it Happen

Maker Movement

A photograph of three people in a modern office environment. In the center, a man with a beard and glasses, wearing a light blue button-down shirt, looks intently at a laptop screen. To his right, another man with dark hair, wearing a dark hoodie, leans in and holds a pen to his chin, appearing to be in deep thought or listening. In the foreground, a third person's arm and hand are visible, pointing towards the laptop screen. The background is softly blurred, showing other office workers and bright, natural light coming from a window.

LearnJDE.com/YouMakeItHappen





Demo 1 – From Idea(thon) to Solution

On-Line Work Orders

Angela Enyeart

Little Rapids – On-Line Work Order

Collaborate 2017 Ideathon Winner

Dispatch List - Online WO - Work Order Print Information

✕ Hrs Inq Maint Hrs (2) Mat Req Qty Inquiry Issues Inquiry Form Tools

Order 862626 WO Customer Georgia Pacific / Savannah - PD Qty Ordered 2000000 Time of Last Entry
Item 72516 ANGEL SOFT PS ULTRA T&T 16 LB WH 12.5 IN Qty in Overrun 84425
Customer Item Number LABL1656030R Qty from Overrun Qty Completed 2221195

WO Complete Material Usage Enter Quantity Machine Hrs (3)

Assembly / Instructions Parts/Routing Operator Notes Spec Sheet Item Attachment Data Sheet

Item Number 72516 ANGEL SOFT PS ULTRA T&T Primary Business Unit 31111
Effective Thru Date
PRODUCTION SPEED
Production Speed

Records 1 - 10

Deck	Color Num	Description	Anilox	VIS	Anilox Volume	Repeat
<input checked="" type="radio"/>	1	59473 5D061 - BOTH	360	11	4.84	
<input type="radio"/>	2	58856 9D010	440	4	3.62	
<input type="radio"/>	3	58323 23-17-666	300	13	5.22	
<input type="radio"/>	4					
<input type="radio"/>	5					
<input type="radio"/>	6					
<input type="radio"/>	7					
<input type="radio"/>	8					
<input type="radio"/>	9					
<input type="radio"/>	10					

TENSIONS
UNWIND INFEED CHILL REWIND

EXTENSIBLE/NON-EXTENSIBLE
☐ Extensible ☐ Non-Extensible

TREATER
☐ ON ☐ OFF ☐ Auto ☐ Manual
KWS FPM

- On-Line Work Order for Operator on manufacturing line
- Provides all necessary information and actions in one place
- Resulted in improved efficiency and greater data accuracy

On-Line Work Order Demo

- You saw a better way to deliver user centric applications without customizations
- We used just a few no code/low code frameworks available today
- Other Scenarios include Customer Service Representative Console, Production Scheduler Cockpit, Project Manager Dashboard

On-Line Work Order Demo

Giving Users What They Want without Customizing

What You Saw

- Bringing together a user's tasks into one screen
- Using no code/low code tools available today
- Ways to protect your upgrades while making users happy

Behind the Scenes

- Standard JD Edwards Applications with new layouts and fields
- User Defined Objects used to personalize and configure JD Edwards

EnterpriseOne Features

- User Defined Objects:
 - List View Grid Format
 - CafeOne
 - Form Personalization
 - Form Extensions
- Standard JD Edwards Manufacturing Applications

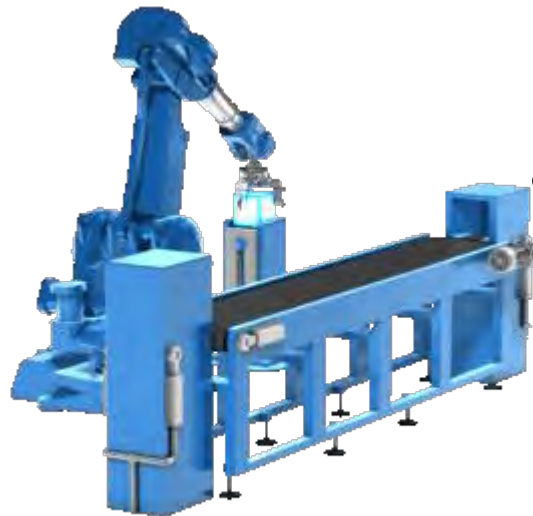
Demo 2 – Orchestrating Your Business

JDE Orchestrator and IoT Production Monitoring Cloud Service

Gerry Dewil

IoT Production Monitoring

- Visibility into your factories and production process
- Monitors health and utilization
- Predicts and diagnoses issues
- Minimizes downtime



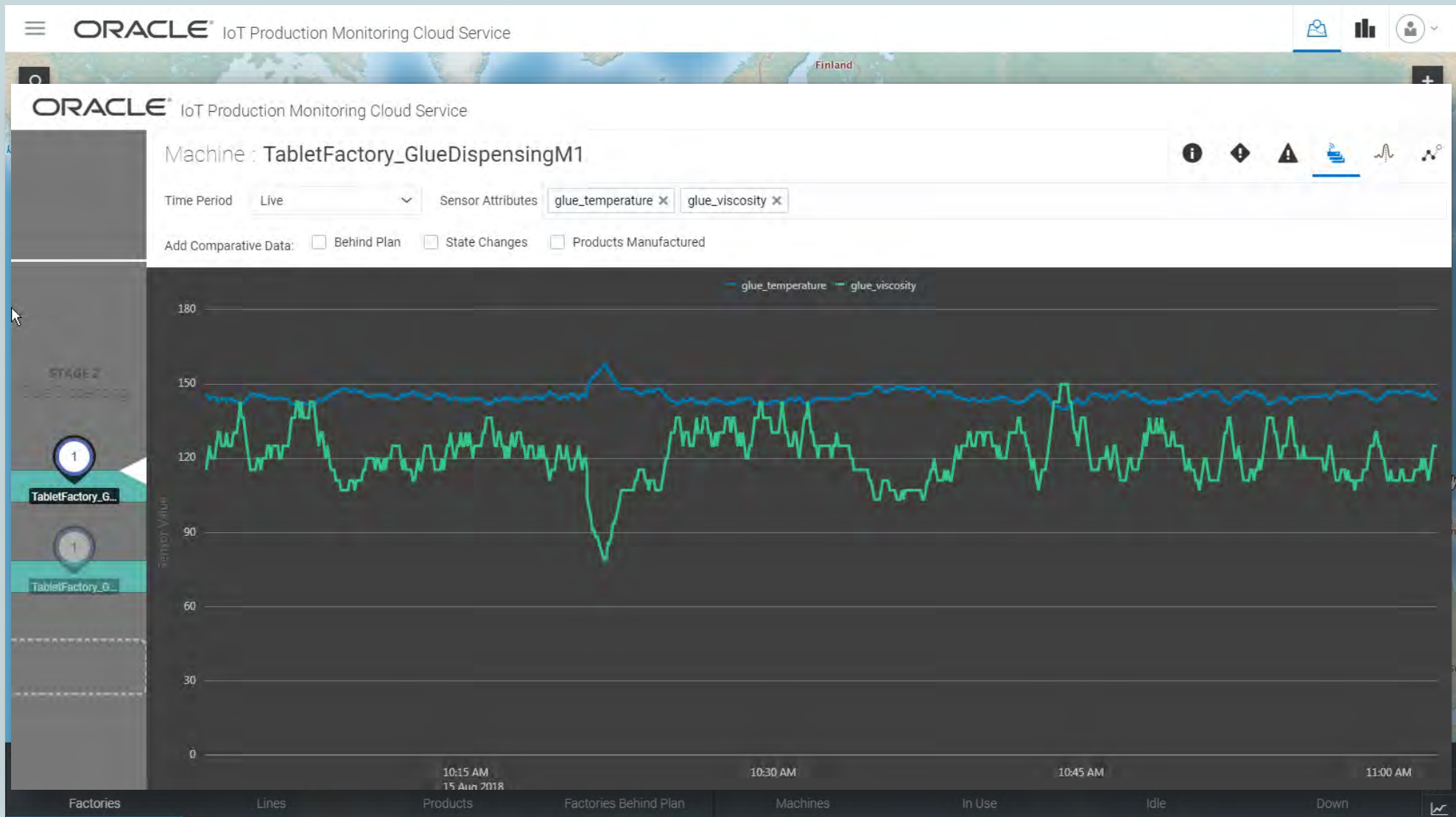
JDE Manufacturing

- Complete suite of integrated applications
- Robust manufacturing functionality
- Define manufacturing execution
- Assign work orders to work centers

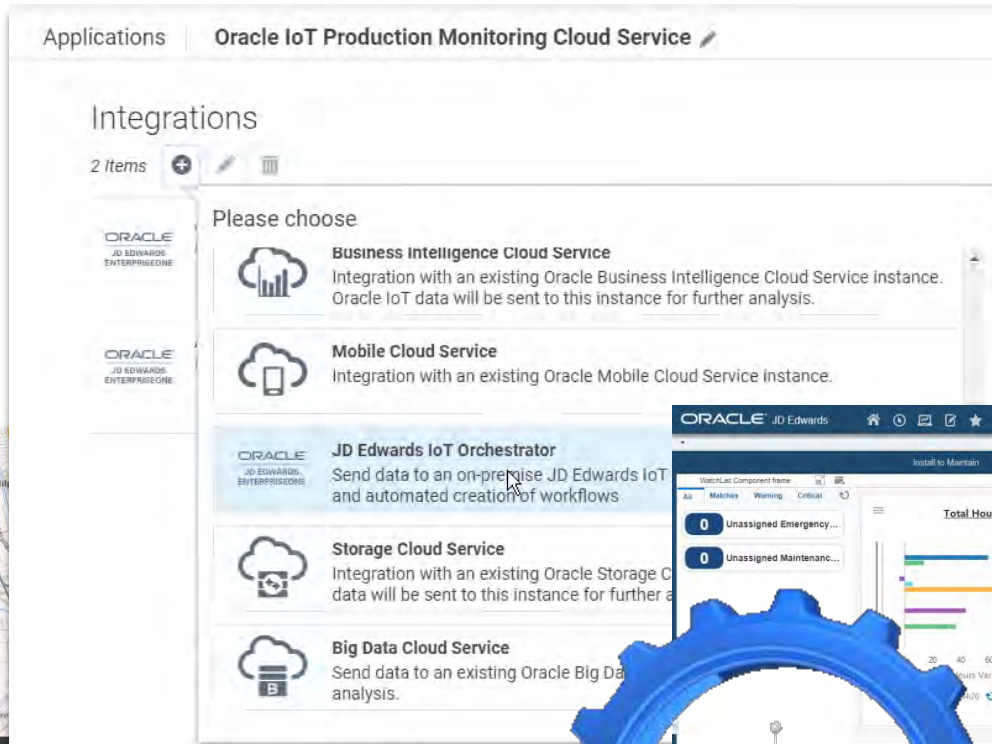
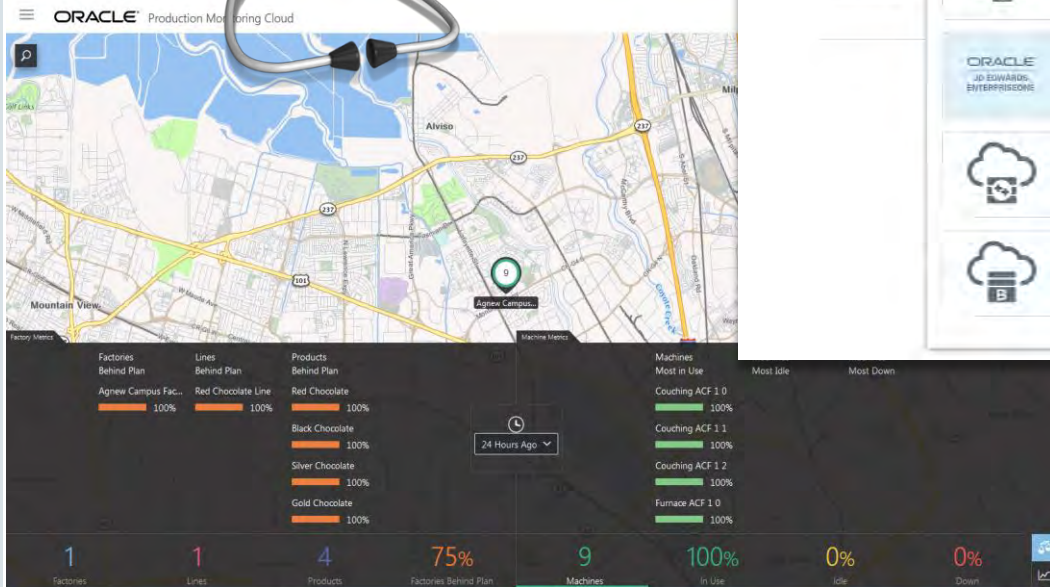
IoT Production Monitoring



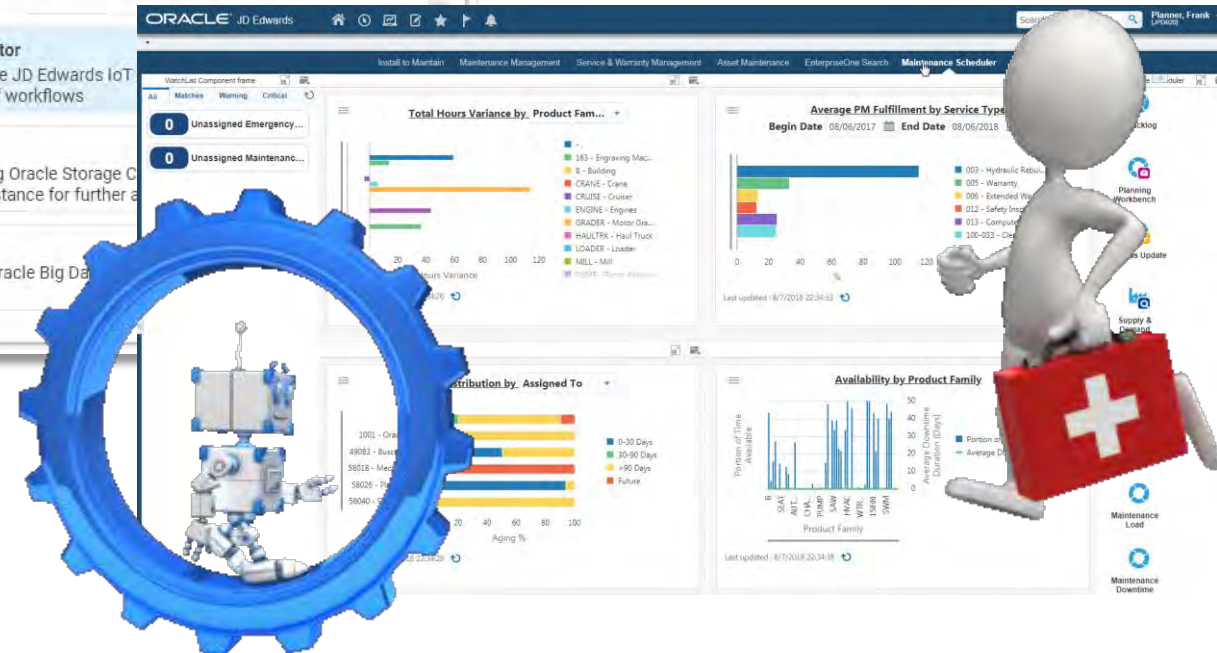
Monitor thousands of events in factories all over the world
Take nervousness out of the system
Let IoT PM detect anomalies



IoT Production Monitoring



JD Edwards Orchestrator



Orchestrator Demo

- You saw IoT Production Monitoring check the health and detect an issue
- The JDE Orchestrator made a smart decision to solve the problem
- JDE reassigned the work orders to avoid disruption



Demo 3 – Notifications Anytime, Anywhere

Notifications

AJ Schifano

EnterpriseOne Notifications

Stay Connected and Act Fast



- Users stay informed even when not signed on to EnterpriseOne
- Available for EnterpriseOne data or external systems
- Notifications sent to subscribers via multiple methods
 - Low inventory
 - Shipment arriving
 - Equipment down



EnterpriseOne Message Center

The screenshot displays the Oracle JD Edwards EnterpriseOne Message Center interface. The top navigation bar includes the Oracle logo, 'JD Edwards', and a user profile 'AJ User 1 [JDV920]'. The main content area is divided into two sections: a 'Message Center' sidebar on the left and a 'Credit Alert for Customer 3007' detail view on the right.

Message Center Sidebar:

- Notification List 113** (selected) and **Work Center 149**
- Search** bar and **Sorted By: Subject** dropdown
- All** and **Unread** filters
- Show In Groups** checkbox
- 2 forklifts are down in Chicago** (2 notifications)
- 2 forklifts are down in Denver** (2 notifications)
- 2 forklifts are down in Denver** (Forklifts down in Denver/52nd Ave, 08/08/2018 15:59:49, Midwest)
- 2 forklifts are down in Denver** (Forklifts down in Denver/52nd Ave, 08/08/2018 14:54:19, Midwest)
- 2 forklifts are down in Endicott** (2 notifications)
- Credit Alert for Customer 3007** (1 notification)
- Credit Alert for Customer 3007** (On Hold per Accounting: Schwartz Warenhaus, 08/08/2018 15:59:56)
- Credit Alert for Customer 3333** (5 notifications)
- Credit Alert for Customer 700** (12 notifications)
- Expense Reports Due** (11 notifications)
- 150 Notifications** (total)

Credit Alert for Customer 3007 Detail View:

- 08/08/2018 15:59:56**
- On Hold per Accounting: Schwartz Warenhaus**
- Customer 3007 Credit Information:**
- Credit Limit: 0**
- Credit Message: (7) On Credit Hold per Accounting**
- Credit Manager: Abbott, Dominique**
- Credit Manager Address Book Number: 6002**
- Customer Master - Credit**

Manage Your Messages

- Sort
- Search
- Launch applications
- Delete in groups

Notifications Demo

- 1. An event happened in the business: glue too hot**
- 2. The event was reported to JD Edwards**
- 3. JD Edwards took action: change work centers**
- 4. People were notified: by phone, e-mail, and bell**
- 5. People launched the application to act quickly**

Notification Demo

Platform to automate Communications

What You Saw

- Notification when work orders are reassigned
- Message delivery to phone
- Message Center (Planned)
- Available link to application applicable to notification
- Subscribing to a notification

Behind the Scenes

- Integration with Oracle IoT Production Monitoring Cloud

EnterpriseOne Features

- EnterpriseOne Notifications
- Orchestrations
- Watchlists



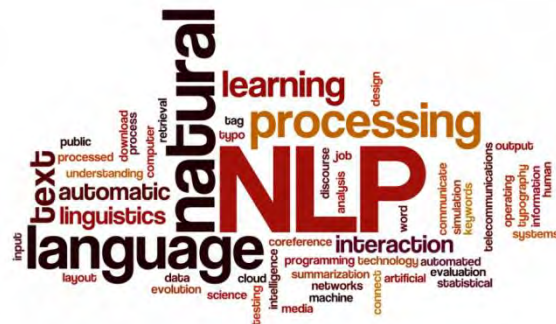
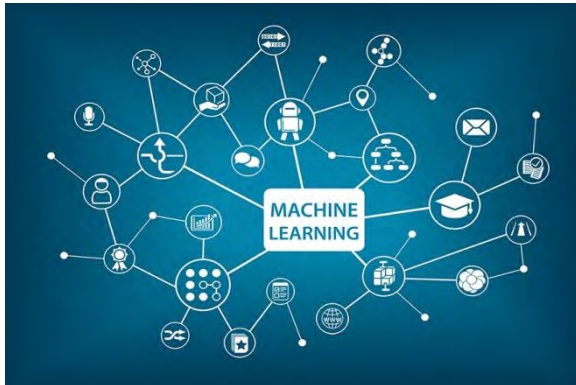
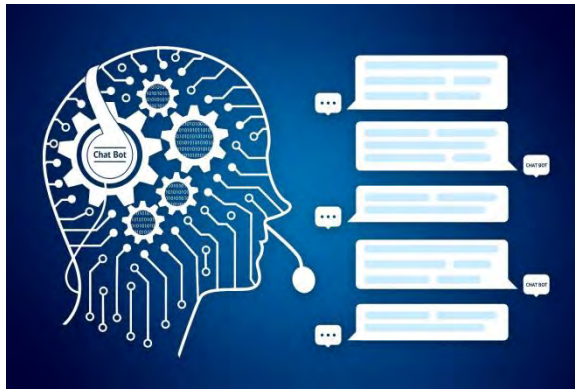
Demo 4 – Let's Chat(bot) about Payables

Chatbot

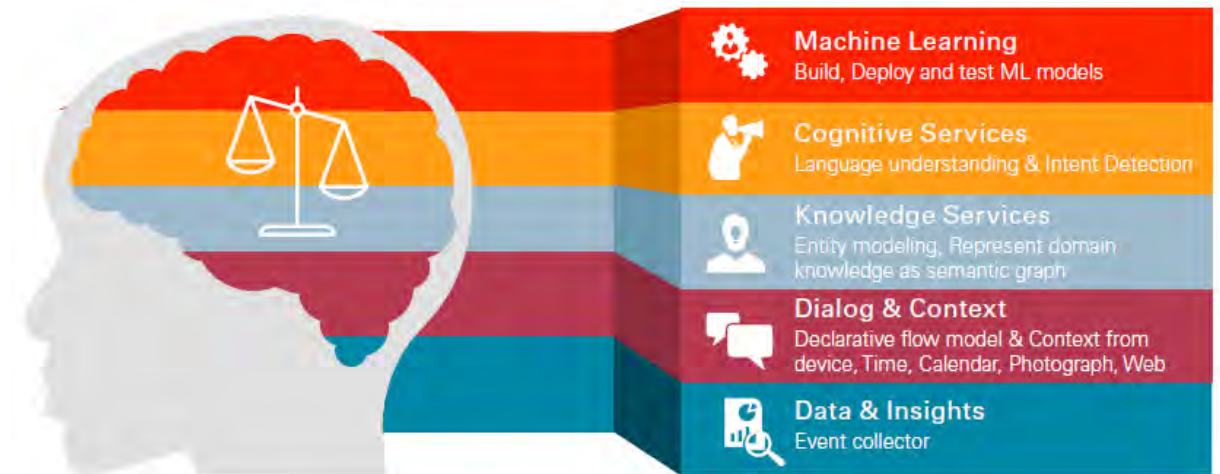
Karen Brown

Exploring Oracle's New Technology

Intelligent Bots

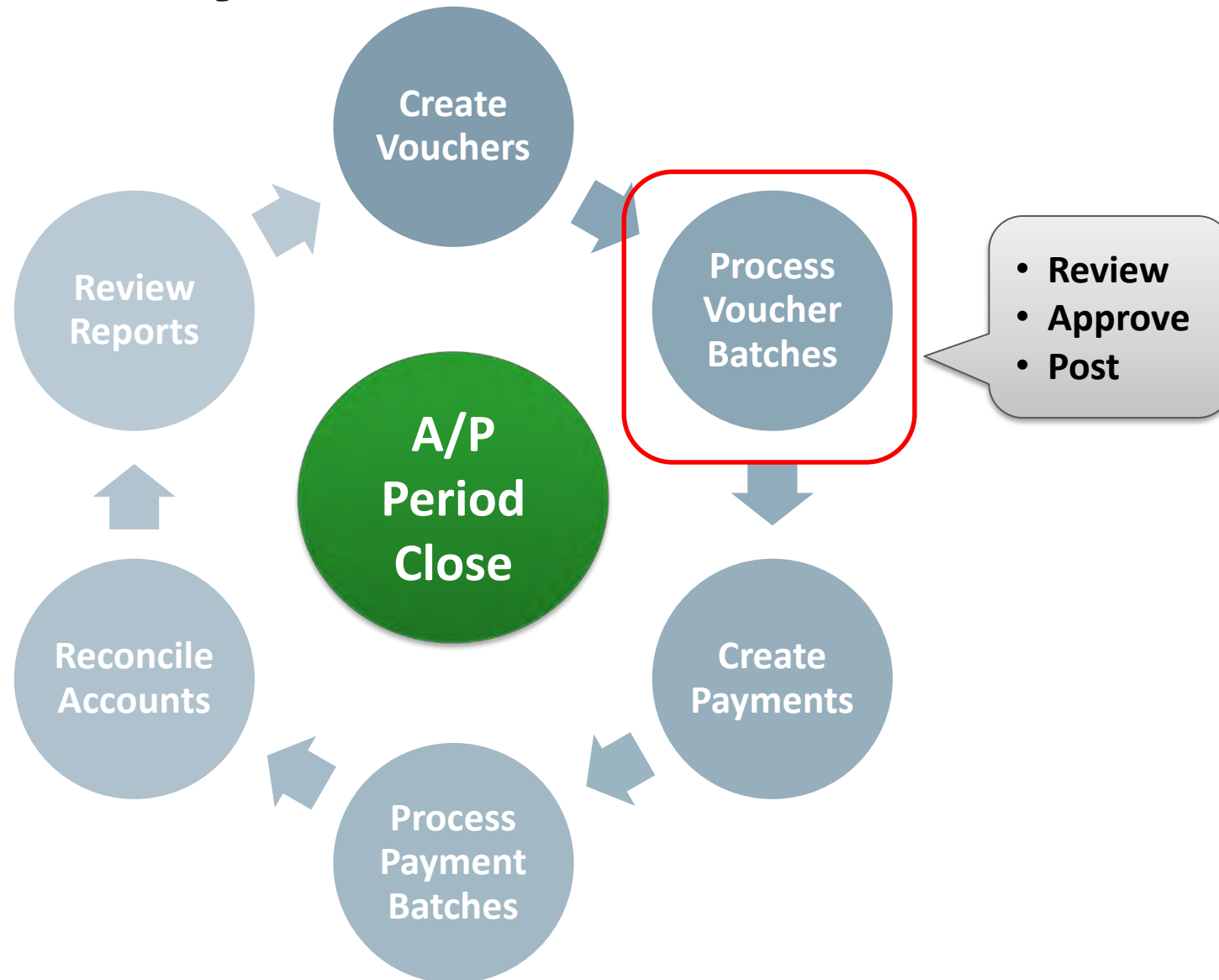


Oracle Mobile Cloud, Enterprise – Intelligent Bots



Accounts Payable Period Close Process

Future



Chatbot Demo

- You saw a 2-way conversation with my assistant Edward
- We used Oracle Mobile Cloud Service – Intelligent Bots and EnterpriseOne Orchestrations
- Other scenarios include Processing sales order that just left the dock or approving purchase orders

Edward the Virtual Assistant

What You Saw

- Edward as a component of a UX One Landing Page
- 2-way conversation with Edward to process voucher batches
- Actions available within the conversation

Behind the Scenes

- Oracle Mobile Cloud Service – Intelligent Bots
- Orchestrations to Review, Approve, and Post Voucher Batches

EnterpriseOne Features

- UX One Landing Page for A/P Manager
- One View Watchlists
- Orchestrations

Demo 5 – All JD Edwards, All the Time

LearnJDE

Ward Quarles

JD Edwards Content at your Fingertips

LEARNJDE

Menu



LearnJDE: The JD Edwards Resource Library

Find JDE content, product documentation and new features

Search LearnJDE

Why You Should Upgrade to EnterpriseOne 9.2

Why Upgrade →

Roadmap →

What's New

User Experience

Digital Transformation

Strategies

ORACLE®

LearnJDE Demo

- You saw how LearnJDE is essential to your Awareness and Understanding in new technologies delivered by JD Edwards
- How we are organizing content by Focus areas
- LearnJDE Search is key to finding content when needed

LearnJDE Demo

All JD Edwards, All the Time

What You Saw

- Why LearnJDE is essential to your awareness and understanding in our new technologies delivered by JD Edwards
- How we are organizing content by Focus areas
- LearnJDE Search is key to finding content when needed

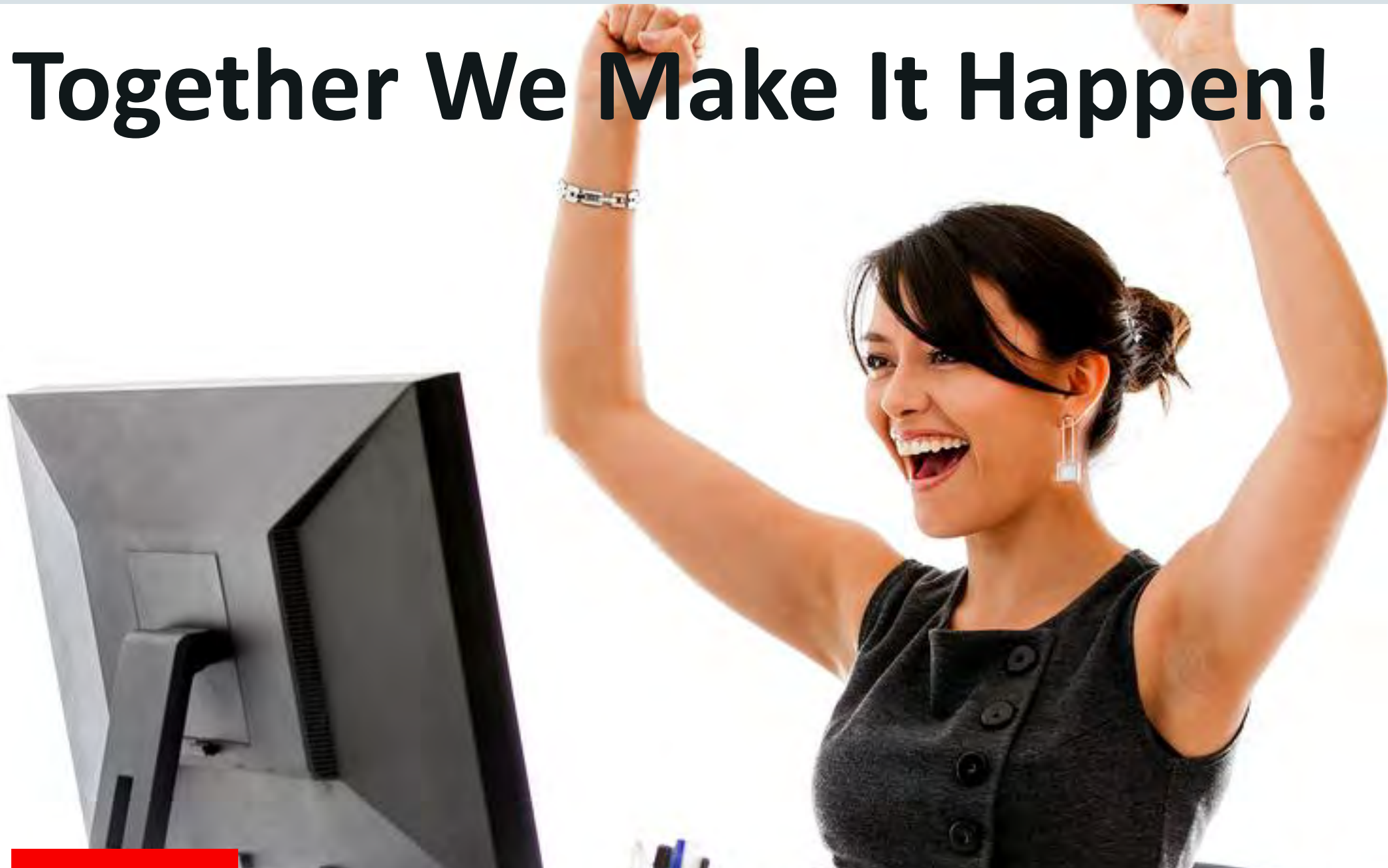
Behind the Scenes

- No additional solutions required for “all things JD Edwards”
- [LearnJDE.com](https://www.oracle.com/learnjde)

EnterpriseOne Features

- No EnterpriseOne features

Together We Make It Happen!



Safe Harbor Statement

The preceding is intended to outline our general product direction. It is intended for information purposes only, and may not be incorporated into any contract. It is not a commitment to deliver any material, code, or functionality, and should not be relied upon in making purchasing decisions. The development, release, and timing of any features or functionality described for Oracle's products remains at the sole discretion of Oracle.

ORACLE®